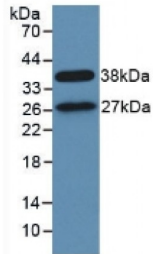


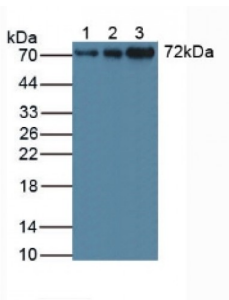
Abbexa Ltd, Innovation Centre, Cambridge Science Park, Cambridge, CB4 0EY, UK  
Telephone: +44 (0) 1223 755950 - Fax: +44 (0) 1223 755951 - E-Mail: info@abbexa.com

## Signal Transducing Adaptor Molecule 1 (STAM1) Antibody

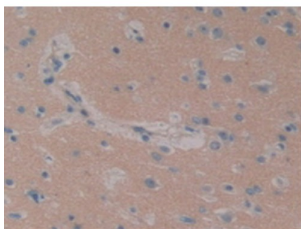
Catalogue No.: abx128799



Western blot analysis of recombinant Human STAM1.



Western blot analysis of (1) Human Jurkat Cells, (2) Human PC-3 Cells, and (3) Human Raji Cells.



IHC-P analysis of Human Brain Tissue, with DAB staining.

Signal Transducing Adaptor Molecule 1 Antibody is a Rabbit Polyclonal against Signal Transducing Adaptor Molecule 1.

**Target:** Signal Transducing Adaptor Molecule 1 (STAM1)

**Reactivity:** Human

**Host:** Rabbit

**Clonality:** Polyclonal

**Tested Applications:** WB, IHC, IF/ICC, IP

**Recommended dilutions:** Optimal dilutions/concentrations should be determined by the end user.

**Immunogen:** STAM1 (Thr196-Val465)

Abbexa Ltd, Innovation Centre, Cambridge Science Park, Cambridge, CB4 0EY, UK  
Telephone: +44 (0) 1223 755950 - Fax: +44 (0) 1223 755951 - E-Mail: info@abbexa.com

- Purification:** Antigen-specific affinity chromatography followed by Protein A affinity chromatography.
- Form:** Liquid
- Conjugation:** Unconjugated
- Storage:** Store at 4 °C for frequent use. Aliquot and store at -20 °C for one year. Avoid repeated freeze/thaw cycles.
- Buffer:** 0.01 M PBS, pH 7.4, containing 0.05% Proclin-300, 50% glycerol.
- Note:** This product is for research use only.