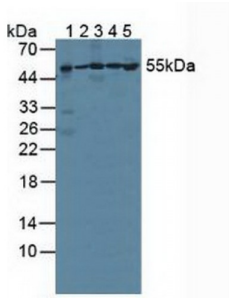


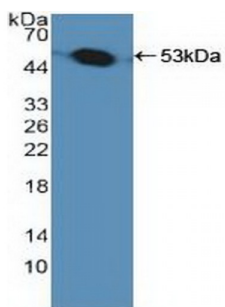
Abbexa Ltd, Innovation Centre, Cambridge Science Park, Cambridge, CB4 0EY, UK
Telephone: +44 (0) 1223 755950 - Fax: +44 (0) 1223 755951 - E-Mail: info@abbexa.com

Proteasome 26S Subunit, ATPase 1 (PSMC1) Antibody

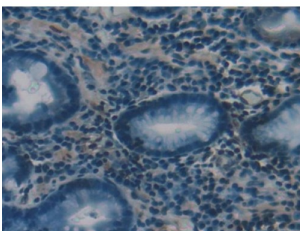
Catalogue No.: abx128623



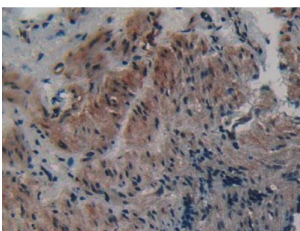
Western blot analysis of (1) Human Lung Tissue, (2) Mouse Brain Tissue, (3) Human A549 Cells, (4) Human HeLa cells and (5) Human Jurkat Cells.



Western blot analysis of recombinant Human PSMC1.



IHC-P analysis of Human Stomach Tissue, with DAB staining.



IHC-P analysis of Human Stomach Tissue, with DAB staining.

Proteasome 26S Subunit, ATPase 1 Antibody is a Rabbit Polyclonal against Proteasome 26S Subunit, ATPase 1.

Target: Proteasome 26S Subunit, ATPase 1 (PSMC1)

Reactivity: Human

Host: Rabbit

Abbexa Ltd, Innovation Centre, Cambridge Science Park, Cambridge, CB4 0EY, UK
Telephone: +44 (0) 1223 755950 - Fax: +44 (0) 1223 755951 - E-Mail: info@abbexa.com

Clonality: Polyclonal

Tested Applications: WB, IHC, IF/ICC, IP

Recommended dilutions: Optimal dilutions/concentrations should be determined by the end user.

Immunogen: PSMC1 (Met1-Leu440)

Purification: Antigen-specific affinity chromatography followed by Protein A affinity chromatography.

Form: Liquid

Conjugation: Unconjugated

Storage: Store at 4 °C for frequent use. Aliquot and store at -20 °C for one year. Avoid repeated freeze/thaw cycles.

Buffer: 0.01 M PBS, pH 7.4, containing 0.05% Proclin-300, 50% glycerol.

Note: This product is for research use only.