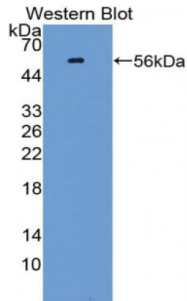


TGF Beta Inducible Early Response Gene 1 (TIEG1) Antibody

Catalogue No.: abx128535



Western blot analysis of the recombinant protein.

TGF Beta Inducible Early Response Gene 1 Antibody is a Rabbit Polyclonal against TGF Beta Inducible Early Response Gene 1.

Target: TGF Beta Inducible Early Response Gene 1 (TIEG1)

Reactivity: Human

Host: Rabbit

Clonality: Polyclonal

Tested Applications: WB, IHC, IF/ICC, IP

Recommended dilutions: Optimal dilutions/concentrations should be determined by the end user.

Immunogen: TIEG1 (Met1-Ser210)

Purification: Antigen-specific affinity chromatography followed by Protein A affinity chromatography.

Form: Liquid

Conjugation: Unconjugated

Storage: Store at 4 °C for frequent use. Aliquot and store at -20 °C for one year. Avoid repeated freeze/thaw cycles.

Swiss Prot: [Q13118](#)

Buffer: PBS, pH 7.4, containing 0.02% NaN₃, 50% glycerol.

Note: This product is for research use only.