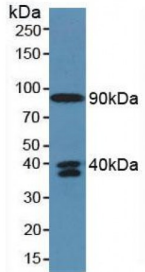


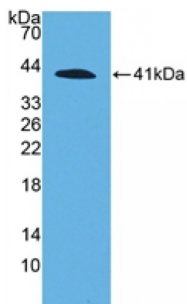
Abbexa Ltd, Innovation Centre, Cambridge Science Park, Cambridge, CB4 0EY, UK
Telephone: +44 (0) 1223 755950 - Fax: +44 (0) 1223 755951 - E-Mail: info@abbexa.com

Complement Component 4a (C4a) Antibody

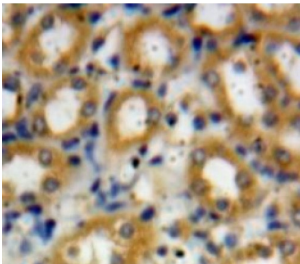
Catalogue No.: abx128515



Western blot analysis of Human Serum.



Western blot analysis of recombinant Human C4a.



IHC-P analysis of Liver tissue, with DAB staining.

Complement C4a Antibody is a Rabbit Polyclonal against Complement C4a.

Target: Complement Component 4a (C4a)

Reactivity: Human

Host: Rabbit

Clonality: Polyclonal

Tested Applications: WB, IHC, IF/ICC, IP

Recommended dilutions: WB: 0.5-2 µg/ml, IHC: 5-20 µg/ml, IF/ICC: 5-20 µg/ml. Optimal dilutions/concentrations should be determined by the end user.

Immunogen: [abx166451](#) - Recombinant C4a (Asn680-Arg756) expressed in E. coli.

Abbexa Ltd, Innovation Centre, Cambridge Science Park, Cambridge, CB4 0EY, UK
Telephone: +44 (0) 1223 755950 - Fax: +44 (0) 1223 755951 - E-Mail: info@abbexa.com

Purification:	Antigen-specific affinity chromatography followed by Protein A affinity chromatography.
Form:	Liquid
Conjugation:	Unconjugated
Storage:	Store at 4 °C for frequent use. Aliquot and store at -20 °C for up to one year. Avoid repeated freeze/thaw cycles.
Swiss Prot:	<u>POCOL4</u>
Buffer:	0.01 M PBS, pH 7.4, containing 0.05% Proclin-300, 50% glycerol.
Note:	This product is for research use only.