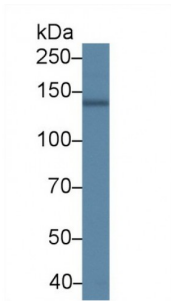


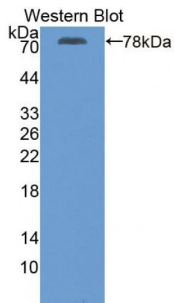
Abbexa Ltd, Innovation Centre, Cambridge Science Park, Cambridge, CB4 0EY, UK  
Telephone: +44 (0) 1223 755950 - Fax: +44 (0) 1223 755951 - E-Mail: [info@abbexa.com](mailto:info@abbexa.com)

## ATPase, Ca<sup>++</sup> Transporting, Cardiac Muscle, Slow Twitch 2 (ATP2A2) Antibody

Catalogue No.: abx128155



Western blot analysis of Pig Cerebrum lysate, using Human ATP2A2 Antibody (2 µg/ml) and HRP-conjugated Goat Anti-Rabbit antibody ([abx400043](#), 0.2 µg/ml).



Western blot analysis of recombinant Human ATP2A2.

IHC-P analysis of Human Tissue, with DAB staining.

ATPase, Ca<sup>++</sup> Transporting, Cardiac Muscle, Slow Twitch 2 Antibody is a Rabbit Polyclonal against ATPase, Ca<sup>++</sup> Transporting, Cardiac Muscle, Slow Twitch 2.

**Target:** ATPase, Ca<sup>++</sup> Transporting, Cardiac Muscle, Slow Twitch 2 (ATP2A2)

**Reactivity:** Human

**Host:** Rabbit

**Clonality:** Polyclonal

**Tested Applications:** WB, IHC, IF/ICC, IP

**Recommended dilutions:** Optimal dilutions/concentrations should be determined by the end user.

Abbexa Ltd, Innovation Centre, Cambridge Science Park, Cambridge, CB4 0EY, UK  
Telephone: +44 (0) 1223 755950 - Fax: +44 (0) 1223 755951 - E-Mail: [info@abbexa.com](mailto:info@abbexa.com)

<b>Immunogen:</b>	ATP2A2 (Ile315-Met756)
<b>Purification:</b>	Antigen-specific affinity chromatography followed by Protein A affinity chromatography.
<b>Form:</b>	Liquid
<b>Conjugation:</b>	Unconjugated
<b>Storage:</b>	Store at 4 °C for frequent use. Aliquot and store at -20 °C for one year. Avoid repeated freeze/thaw cycles.
<b>Swiss Prot:</b>	<a href="#">P16615</a>
<b>Buffer:</b>	0.01 M PBS, pH 7.4, containing 0.05% Proclin-300, 50% glycerol.
<b>Note:</b>	This product is for research use only.