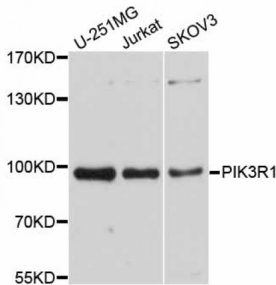


Abbexa Ltd, Innovation Centre, Cambridge Science Park, Cambridge, CB4 0EY, UK  
 Telephone: +44 (0) 1223 755950 - Fax: +44 (0) 1223 755951 - E-Mail: info@abbexa.com

## Phosphatidylinositol 3-Kinase Regulatory Subunit Alpha (PIK3R1) Antibody

Catalogue No.: abx126362



Western blot analysis of extracts of various cell lines, using PIK3R1 antibody (abx126362) at 1/1000 dilution.

PIK3R1 Antibody is a Rabbit Polyclonal against PIK3R1.

**Target:** PIK3R1

**Reactivity:** Human

**Host:** Rabbit

**Clonality:** Polyclonal

**Tested Applications:** WB

**Recommended dilutions:** WB: 1/500 - 1/2000. Optimal dilutions/concentrations should be determined by the end user.

**Purification:** Affinity purified.

**Form:** Liquid

**Isotype:** IgG

**Conjugation:** Unconjugated

**Storage:** Aliquot and store at -20 °C. Avoid repeated freeze/thaw cycles.

**Molecular Weight:** Calculated MW: 42 kDa/49 kDa/53 kDa/83 kDa/84 kDa  
 Observed MW: 95 kDa

**Swiss Prot:** [P27986](#)

**GeneID:** [5295](#)

**Gene Symbol:** PIK3R1

Abbexa Ltd, Innovation Centre, Cambridge Science Park, Cambridge, CB4 0EY, UK  
Telephone: +44 (0) 1223 755950 - Fax: +44 (0) 1223 755951 - E-Mail: [info@abbexa.com](mailto:info@abbexa.com)

**Concentration:** > 1 mg/ml

**Buffer:** PBS, pH 7.3, 0.02% sodium azide, 50% glycerol.

**Note:** This product is for research use only.