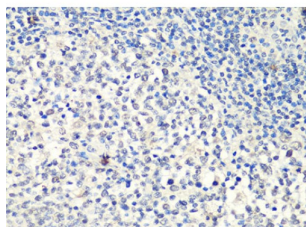


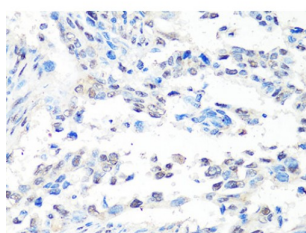
Abbexa Ltd, Innovation Centre, Cambridge Science Park, Cambridge, CB4 0EY, UK
Telephone: +44 (0) 1223 755950 - Fax: +44 (0) 1223 755951 - E-Mail: info@abbexa.com

Metastasis-Associated Protein MTA2 (MTA2) Antibody

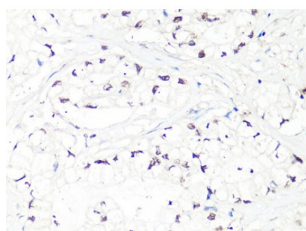
Catalogue No.: abx126193



Immunohistochemistry of paraffin-embedded human tonsil using MTA2 Antibody (abx126193) at dilution of 1/100 (40x lens).



Immunohistochemistry of paraffin-embedded human lung cancer using MTA2 Antibody (abx126193) at dilution of 1/100 (40x lens).



Immunohistochemistry of paraffin-embedded human gastric cancer using MTA2 Antibody (abx126193) at dilution of 1/100 (40x lens).

MTA2 Antibody is a Rabbit Polyclonal against MTA2.

Target: MTA2

Reactivity: Human, Mouse

Host: Rabbit

Clonality: Polyclonal

Tested Applications: WB, IHC

Recommended dilutions: WB: 1/500 - 1/2000, IHC: 1/50 - 1/100. Optimal dilutions/concentrations should be determined by the end user.

Purification: Affinity purified.

Abbexa Ltd, Innovation Centre, Cambridge Science Park, Cambridge, CB4 0EY, UK
Telephone: +44 (0) 1223 755950 - Fax: +44 (0) 1223 755951 - E-Mail: info@abbexa.com

Form:	Liquid
Isotype:	IgG
Conjugation:	Unconjugated
Storage:	Aliquot and store at -20 °C. Avoid repeated freeze/thaw cycles.
Molecular Weight:	Calculated MW: 55 kDa/75 kDa Observed MW: Refer to Figures
Swiss Prot:	O94776
GeneID:	9219
Gene Symbol:	MTA2
Concentration:	> 1 mg/ml
Buffer:	PBS, pH 7.3, 0.02% sodium azide, 50% glycerol.
Note:	This product is for research use only.