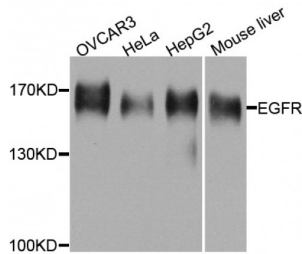


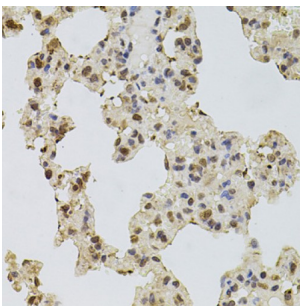
Abbexa Ltd, Innovation Centre, Cambridge Science Park, Cambridge, CB4 0EY, UK
Telephone: +44 (0) 1223 755950 - Fax: +44 (0) 1223 755951 - E-Mail: info@abbexa.com

Epidermal Growth Factor Receptor (EGFR) Antibody

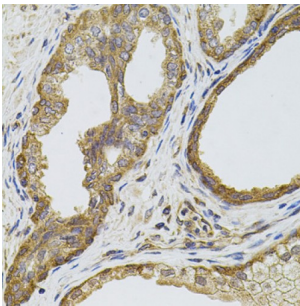
Catalogue No.: abx125797



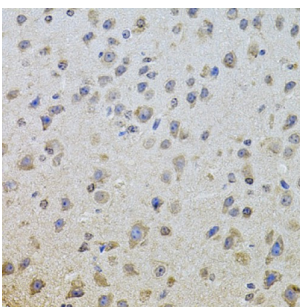
Western blot analysis of extracts of various cell lines, using EGFR antibody (abx125797) at 1/1000 dilution.



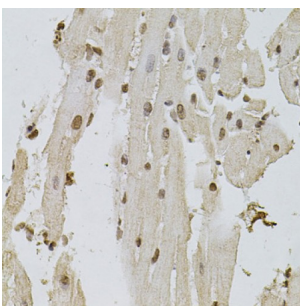
Immunohistochemistry of paraffin-embedded rat lung using EGFR antibody (abx125797) at dilution of 1/100 (40x lens).



Immunohistochemistry of paraffin-embedded human prostate using EGFR antibody (abx125797) at dilution of 1/100 (40x lens).



Immunohistochemistry of paraffin-embedded mouse brain using EGFR antibody (abx125797) at dilution of 1/100 (40x lens).



Immunohistochemistry of paraffin-embedded mouse heart using EGFR antibody (abx125797) at dilution of 1/100 (40x lens).

EGFR Antibody is a Rabbit Polyclonal against EGFR.

Abbexa Ltd, Innovation Centre, Cambridge Science Park, Cambridge, CB4 0EY, UK
Telephone: +44 (0) 1223 755950 - Fax: +44 (0) 1223 755951 - E-Mail: info@abbexa.com

Target:	EGFR
Reactivity:	Human, Mouse, Rat
Host:	Rabbit
Clonality:	Polyclonal
Tested Applications:	WB, IHC
Recommended dilutions:	WB: 1/500 - 1/2000, IHC: 1/50 - 1/200. Optimal dilutions/concentrations should be determined by the end user.
Purification:	Affinity purified.
Form:	Liquid
Isotype:	IgG
Conjugation:	Unconjugated
Storage:	Aliquot and store at -20 °C. Avoid repeated freeze/thaw cycles.
Molecular Weight:	Calculated MW: 44 kDa/69 kDa/77 kDa/134 kDa Observed MW: 160 kDa
Swiss Prot:	P00533
GeneID:	1956
Gene Symbol:	EGFR
Concentration:	> 1 mg/ml
Buffer:	PBS, pH 7.3, 0.02% sodium azide, 50% glycerol.
Note:	This product is for research use only.