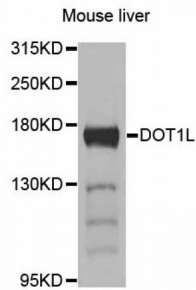


Abbexa Ltd, Innovation Centre, Cambridge Science Park, Cambridge, CB4 0EY, UK
 Telephone: +44 (0) 1223 755950 - Fax: +44 (0) 1223 755951 - E-Mail: info@abbexa.com

DOT1 Like, Histone H3 Methyltransferase (DOT1L) Antibody

Catalogue No.: abx125777



Western blot analysis of extracts of mouse liver, using DOT1L antibody (abx125777) at 1/1000 dilution.

DOT1L Antibody is a Rabbit Polyclonal against DOT1L.

Target: DOT1L

Reactivity: Mouse

Host: Rabbit

Clonality: Polyclonal

Tested Applications: WB

Recommended dilutions: WB: 1/500 - 1/2000. Optimal dilutions/concentrations should be determined by the end user.

Purification: Affinity purified.

Form: Liquid

Isotype: IgG

Conjugation: Unconjugated

Storage: Aliquot and store at -20 °C. Avoid repeated freeze/thaw cycles.

Molecular Weight: Calculated MW: 164 kDa/184 kDa
 Observed MW: 170 kDa

Swiss Prot: [Q8TEK3](#)

GenID: [84444](#)

Gene Symbol: DOT1L

Abbexa Ltd, Innovation Centre, Cambridge Science Park, Cambridge, CB4 0EY, UK
Telephone: +44 (0) 1223 755950 - Fax: +44 (0) 1223 755951 - E-Mail: info@abbexa.com

Concentration: > 1 mg/ml

Buffer: PBS, pH 7.3, 0.02% sodium azide, 50% glycerol.

Note: This product is for research use only.