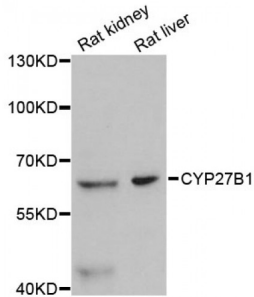


Abbexa Ltd, Innovation Centre, Cambridge Science Park, Cambridge, CB4 0EY, UK
Telephone: +44 (0) 1223 755950 - Fax: +44 (0) 1223 755951 - E-Mail: info@abbexa.com

Cytochrome P450 27B1 (CYP27B1) Antibody

Catalogue No.: abx125742



Western blot analysis of extracts of various cell lines, using CYP27B1 antibody (abx125742) at 1:3000 dilution.

CYP27B1 Antibody is a Rabbit Polyclonal against CYP27B1.

Target: CYP27B1

Reactivity: Human, Mouse, Rat

Host: Rabbit

Clonality: Polyclonal

Tested Applications: WB

Recommended dilutions: WB: 1/200 - 1/500. Optimal dilutions/concentrations should be determined by the end user.

Purification: Affinity purified.

Form: Liquid

Isotype: IgG

Conjugation: Unconjugated

Storage: Aliquot and store at -20 °C. Avoid repeated freeze/thaw cycles.

Molecular Weight: Calculated MW: 56 kDa
Observed MW: 63 kDa

Swiss Prot: [O15528](#)

GenID: [1594](#)

Gene Symbol: CYP27B1

Abbexa Ltd, Innovation Centre, Cambridge Science Park, Cambridge, CB4 0EY, UK
Telephone: +44 (0) 1223 755950 - Fax: +44 (0) 1223 755951 - E-Mail: info@abbexa.com

OMIM: [609506](#)

NCBI Accession: NP_000776.1

HGNC: 2606

Ensembl: ENSG00000111012

Concentration: > 1 mg/ml

Buffer: PBS, pH 7.3, 0.02% sodium azide, 50% glycerol.

Note: This product is for research use only.