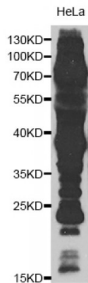


Abbexa Ltd, Innovation Centre, Cambridge Science Park, Cambridge, CB4 0EY, UK  
Telephone: +44 (0) 1223 755950 - Fax: +44 (0) 1223 755951 - E-Mail: info@abbexa.com

### Pan Acetyl-Lysine Antibody

Catalogue No.: abx125432



Western blot analysis of extracts of HeLa cells, using Pan Acetyl-Lysine antibody (abx125432).

Pan Acetyl-Lysine Antibody is a Rabbit Pan- acetylation pAb against Pan Acetyl-Lysine.

**Target:** Pan Acetyl-Lysine

**Reactivity:** General

**Host:** Rabbit

**Modification:** Pan-acetylation

**Clonality:** Polyclonal

**Tested Applications:** WB, IP

**Recommended dilutions:** WB: 1/500 - 1/1000, IP: 1/20 - 1/50. Optimal dilutions/concentrations should be determined by the end user.

**Purification:** Affinity purified.

**Form:** Liquid

**Isotype:** IgG

**Conjugation:** Unconjugated

**Storage:** Aliquot and store at -20 °C. Avoid repeated freeze/thaw cycles.

**Molecular Weight:** Observed MW: Refer to Figures

**Gene Symbol:** Pan-Kac

**Concentration:** > 1 mg/ml

Abbexa Ltd, Innovation Centre, Cambridge Science Park, Cambridge, CB4 0EY, UK  
Telephone: +44 (0) 1223 755950 - Fax: +44 (0) 1223 755951 - E-Mail: [info@abbexa.com](mailto:info@abbexa.com)

**Buffer:** PBS, pH 7.3, 0.02% sodium azide, 50% glycerol.

**Note:** This product is for research use only.