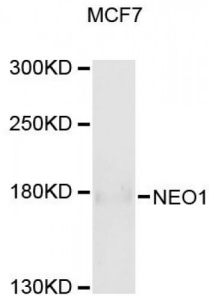


Abbexa Ltd, Innovation Centre, Cambridge Science Park, Cambridge, CB4 0EY, UK
Telephone: +44 (0) 1223 755950 - Fax: +44 (0) 1223 755951 - E-Mail: info@abbexa.com

Neogenin 1 (NEO1) Antibody

Catalogue No.: abx124224



Western blot analysis of extracts of MCF-7 cells, using NEO1 antibody (abx124224) at 1/1000 dilution.

NEO1 Antibody is a Rabbit Polyclonal Antibody against NEO1.

Target: NEO1

Reactivity: Human

Host: Rabbit

Clonality: Polyclonal

Tested Applications: WB

Recommended dilutions: WB: 1/500 - 1/1000. Optimal dilutions/concentrations should be determined by the end user.

Immunogen: The immunogen used to raise this antibody has a length of 1461 amino acids.

Purification: Affinity purified.

Form: Liquid

Isotype: IgG

Conjugation: Unconjugated

Storage: Aliquot and store at -20 °C. Avoid repeated freeze/thaw cycles.

Molecular Weight: Calculated MW: 154 kDa/158 kDa/160 kDa
Observed MW: 160 kDa

GenEID: [4756](#)

Gene Symbol: NEO1

Abbexa Ltd, Innovation Centre, Cambridge Science Park, Cambridge, CB4 0EY, UK
Telephone: +44 (0) 1223 755950 - Fax: +44 (0) 1223 755951 - E-Mail: info@abbexa.com

Concentration: > 1 mg/ml

Buffer: PBS, pH 7.3, 0.02% sodium azide, 50% glycerol.

Note: This product is for research use only.