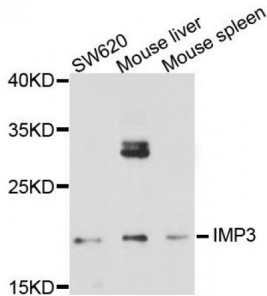


## U3 Small Nucleolar Ribonucleoprotein Protein IMP3 (IMP3) Antibody

Catalogue No.: abx123525



Western blot analysis of extracts of various cell lines, using IMP3 antibody (abx123525) at 1/1000 dilution.

IMP3 Antibody is a Rabbit Polyclonal Antibody against IMP3.

<b>Target:</b>	IMP3
<b>Reactivity:</b>	Human, Mouse
<b>Host:</b>	Rabbit
<b>Clonality:</b>	Polyclonal
<b>Tested Applications:</b>	WB

**Recommended dilutions:** WB: 1/200 - 1/2000. Optimal dilutions/concentrations should be determined by the end user.

**Immunogen:** The immunogen used to raise this antibody has a length of 184 amino acids.

**Purification:** Affinity purified.

**Form:** Liquid

**Isotype:** IgG

**Conjugation:** Unconjugated

**Storage:** Aliquot and store at -20 °C. Avoid repeated freeze/thaw cycles.

**Molecular Weight:** Calculated MW: 21 kDa  
Observed MW: 22 kDa

**GeneID:** [55272](#)

**Gene Symbol:** IMP3

Abbexa Ltd, Innovation Centre, Cambridge Science Park, Cambridge, CB4 0EY, UK  
Telephone: +44 (0) 1223 755950 - Fax: +44 (0) 1223 755951 - E-Mail: [info@abbexa.com](mailto:info@abbexa.com)

**Concentration:** > 1 mg/ml

**Buffer:** PBS, pH 7.3, 0.02% sodium azide, 50% glycerol.

**Note:** This product is for research use only.