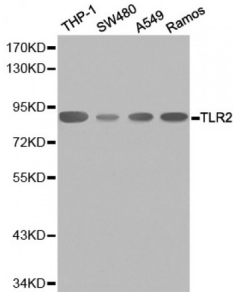


Abbexa Ltd, Innovation Centre, Cambridge Science Park, Cambridge, CB4 0EY, UK
 Telephone: +44 (0) 1223 755950 - Fax: +44 (0) 1223 755951 - E-Mail: info@abbexa.com

Toll-Like Receptor 2 (TLR2) Antibody

Catalogue No.: abx123395



Western blot analysis of extracts of various cell lines, using TLR2 antibody (abx123395).

Toll-like Receptor 2 Antibody is a Rabbit Polyclonal Antibody against Toll-like Receptor 2.

Target: Toll-like Receptor 2

Reactivity: Human, Mouse, Rat

Host: Rabbit

Clonality: Polyclonal

Tested Applications: WB, IF/ICC, IP

Recommended dilutions: WB: 1/500 - 1/2000, IF/ICC: 1/50 - 1/200, IP: 1/20 - 1/50. Optimal dilutions/concentrations should be determined by the end user.

Purification: Affinity purified.

Form: Liquid

Isotype: IgG

Conjugation: Unconjugated

Storage: Aliquot and store at -20 °C. Avoid repeated freeze/thaw cycles.

Molecular Weight: Calculated MW: 89 kDa
 Observed MW: 85 kDa

Swiss Prot: [O60603](#)

GeneID: [7097](#)

Gene Symbol: TLR2

Abbexa Ltd, Innovation Centre, Cambridge Science Park, Cambridge, CB4 0EY, UK
Telephone: +44 (0) 1223 755950 - Fax: +44 (0) 1223 755951 - E-Mail: info@abbexa.com

Concentration: > 1 mg/ml

Buffer: PBS, pH 7.3, 0.02% sodium azide, 50% glycerol.

Note: This product is for research use only.