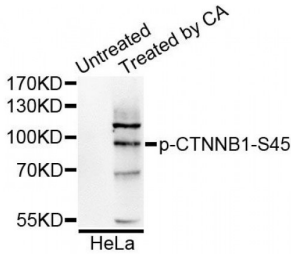


Abbexa Ltd, Innovation Centre, Cambridge Science Park, Cambridge, CB4 0EY, UK
 Telephone: +44 (0) 1223 755950 - Fax: +44 (0) 1223 755951 - E-Mail: info@abbexa.com

CTNNB1 (pS45) Antibody

Catalogue No.: abx123329



Western blot analysis of extracts of HeLa cells, using Phospho-CTNNB1-S45 antibody (abx123329) at 1/1000 dilution.

CTNNB1 (pS45) Antibody is a Rabbit Polyclonal Antibody against CTNNB1 (pS45).

Target: CTNNB1 (pS45)

Reactivity: Human

Host: Rabbit

Modification: Phosphorylation

Clonality: Polyclonal

Tested Applications: WB

Recommended dilutions: WB: 1/500 - 1/2000. Optimal dilutions/concentrations should be determined by the end user.

Purification: Affinity purified.

Form: Liquid

Isotype: IgG

Conjugation: Unconjugated

Storage: Aliquot and store at -20 °C. Avoid repeated freeze/thaw cycles.

Molecular Weight: Calculated MW: 9 kDa/85 kDa
 Observed MW: 92 kDa

Swiss Prot: [P35222](#)

GeneID: [1499](#)

Abbexa Ltd, Innovation Centre, Cambridge Science Park, Cambridge, CB4 0EY, UK
Telephone: +44 (0) 1223 755950 - Fax: +44 (0) 1223 755951 - E-Mail: info@abbexa.com

Gene Symbol: CTNNB1

Concentration: > 1 mg/ml

Buffer: PBS, pH 7.3, 0.02% sodium azide, 50% glycerol.

Note: This product is for research use only.