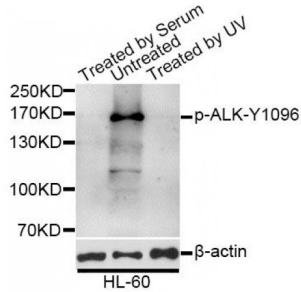


Abbexa Ltd, Innovation Centre, Cambridge Science Park, Cambridge, CB4 0EY, UK  
 Telephone: +44 (0) 1223 755950 - Fax: +44 (0) 1223 755951 - E-Mail: info@abbexa.com

**ALK (pY1096) Antibody**

Catalogue No.: abx123280



Western blot analysis of extracts of HL-60 and HL-60 cells, using Phospho-ALK-Y1096 antibody (abx123280) at 1/1000 dilution. HL-60 cells were treated by 10% FBS after serum-starvation overnight. HL-60 cells were treated by UV for 15-30 minutes.

ALK (pY1096) Antibody is a Rabbit Polyclonal Antibody against ALK (pY1096).

**Target:** ALK (pY1096)

**Reactivity:** Human

**Host:** Rabbit

**Modification:** Phosphorylation

**Clonality:** Polyclonal

**Tested Applications:** WB

**Recommended dilutions:** WB: 1/500 - 1/2000. Optimal dilutions/concentrations should be determined by the end user.

**Purification:** Affinity purified.

**Form:** Liquid

**Isotype:** IgG

**Conjugation:** Unconjugated

**Storage:** Aliquot and store at -20 °C. Avoid repeated freeze/thaw cycles.

**Molecular Weight:** Calculated MW: 176 kDa  
 Observed MW: 176 kDa

**Swiss Prot:** [Q9UM73](#)

**GeneID:** [238](#)

Abbexa Ltd, Innovation Centre, Cambridge Science Park, Cambridge, CB4 0EY, UK  
Telephone: +44 (0) 1223 755950 - Fax: +44 (0) 1223 755951 - E-Mail: [info@abbexa.com](mailto:info@abbexa.com)

**Gene Symbol:** ALK

**Concentration:** > 1 mg/ml

**Buffer:** PBS, pH 7.3, 0.02% sodium azide, 50% glycerol.

**Note:** This product is for research use only.