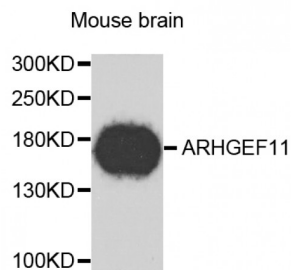


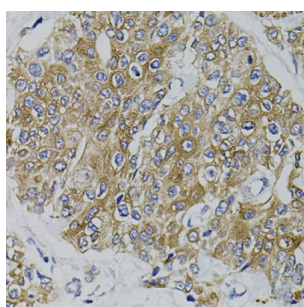
Abbexa Ltd, Innovation Centre, Cambridge Science Park, Cambridge, CB4 0EY, UK
Telephone: +44 (0) 1223 755950 - Fax: +44 (0) 1223 755951 - E-Mail: info@abbexa.com

Rho Guanine Nucleotide Exchange Factor 11 (ARHGEF11) Antibody

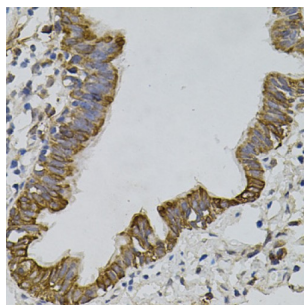
Catalogue No.: abx123059



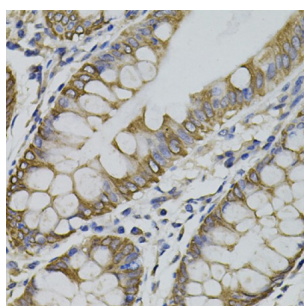
Western blot analysis of extracts of mouse brain, using ARHGEF11 antibody (abx123059) at 1/1000 dilution.



Immunohistochemistry of paraffin-embedded human prostate cancer using ARHGEF11 antibody (abx123059) (40x lens).



Immunohistochemistry of paraffin-embedded human lung using ARHGEF11 antibody (abx123059) (40x lens).



Immunohistochemistry of paraffin-embedded human colon using ARHGEF11 antibody (abx123059) (40x lens).

ARHGEF11 Antibody is a Rabbit Polyclonal Antibody against ARHGEF11.

Target: ARHGEF11

Reactivity: Human, Mouse, Rat

Host: Rabbit

Abbexa Ltd, Innovation Centre, Cambridge Science Park, Cambridge, CB4 0EY, UK
Telephone: +44 (0) 1223 755950 - Fax: +44 (0) 1223 755951 - E-Mail: info@abbexa.com

Clonality: Polyclonal

Tested Applications: WB, IHC

Recommended dilutions: WB: 1/500 - 1/2000, IHC: 1/50 - 1/100. Optimal dilutions/concentrations should be determined by the end user.

Purification: Affinity purified.

Form: Liquid

Isotype: IgG

Conjugation: Unconjugated

Storage: Aliquot and store at -20 °C. Avoid repeated freeze/thaw cycles.

Molecular Weight: Calculated MW: 167 kDa/172 kDa
Observed MW: 168 kDa

GeneID: [9826](#)

Gene Symbol: ARHGEF11

Concentration: > 1 mg/ml

Buffer: PBS, pH 7.3, 0.02% sodium azide, 50% glycerol.

Note: This product is for research use only.