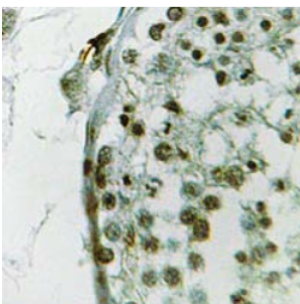
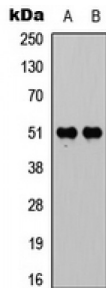


Abbexa Ltd, Innovation Centre, Cambridge Science Park, Cambridge, CB4 0EY, UK
Telephone: +44 (0) 1223 755950 - Fax: +44 (0) 1223 755951 - E-Mail: info@abbexa.com

VDR (pS208) Antibody

Catalogue No.: abx121809



VDR (pS208) Antibody is a Rabbit Polyclonal against VDR (pS208).

Target: VDR (pS208)

Reactivity: Human, Monkey

Host: Rabbit

Clonality: Polyclonal

Tested Applications: WB, IF/ICC

Recommended dilutions: WB: 1/500 - 1/1000, IF/ICC: 1/100 - 1/500. Optimal dilutions/concentrations should be determined by the end user.

Immunogen: KLH-conjugated synthetic peptide encompassing a sequence within the center region of human VDR (pS208). The exact sequence is proprietary.

Purification: The antibody was purified by immunogen affinity chromatography.

Form: Liquid

Isotype: IgG

Conjugation: KLH

Abbexa Ltd, Innovation Centre, Cambridge Science Park, Cambridge, CB4 0EY, UK
Telephone: +44 (0) 1223 755950 - Fax: +44 (0) 1223 755951 - E-Mail: info@abbexa.com

Specificity: Recognizes endogenous levels of VDR (pS208) protein.

Swiss Prot: [P11473](#) [P48281](#) [P13053](#)

GeneID: [7421](#) [22337](#) [24873](#)

Gene Symbol: VDR

Buffer: Liquid in 0.42% Potassium phosphate, 0.87% Sodium chloride, pH 7.3, 30% glycerol, and 0.01% sodium azide.

Note: This product is for research use only.