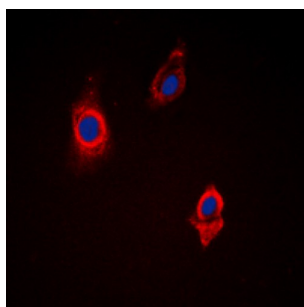
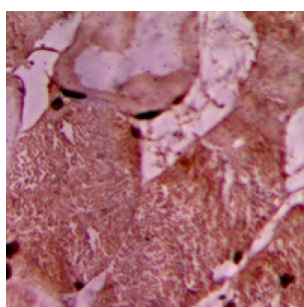
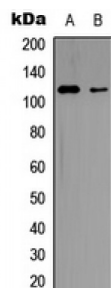


Abbexa Ltd, Innovation Centre, Cambridge Science Park, Cambridge, CB4 0EY, UK  
Telephone: +44 (0) 1223 755950 - Fax: +44 (0) 1223 755951 - E-Mail: info@abbexa.com

### Vinculin (VCL) Antibody

Catalogue No.: abx121808



Vinculin Antibody is a Rabbit Polyclonal against Vinculin.

**Target:** Vinculin

**Reactivity:** Human, Mouse, Rat, Chicken, Pig

**Host:** Rabbit

**Clonality:** Polyclonal

**Tested Applications:** WB, IHC, IF/ICC

**Recommended dilutions:** WB: 1/500 - 1/1000, IHC: 1/100 - 1/200, IF/ICC: 1/100 - 1/500. Optimal dilutions/concentrations should be determined by the end user.

**Immunogen:** KLH-conjugated synthetic peptide encompassing a sequence within the center region of human Vinculin. The exact sequence is proprietary.

Abbexa Ltd, Innovation Centre, Cambridge Science Park, Cambridge, CB4 0EY, UK  
Telephone: +44 (0) 1223 755950 - Fax: +44 (0) 1223 755951 - E-Mail: [info@abbexa.com](mailto:info@abbexa.com)

<b>Purification:</b>	The antibody was purified by immunogen affinity chromatography.
<b>Form:</b>	Liquid
<b>Conjugation:</b>	Unconjugated
<b>Specificity:</b>	Recognizes endogenous levels of Vinculin protein.
<b>Storage:</b>	Aliquot and store at -20°C for one year. Avoid repeated freeze/thaw cycles.
<b>Swiss Prot:</b>	<a href="#">P18206</a> <a href="#">Q64727</a> <a href="#">P85972</a>
<b>GeneID:</b>	<a href="#">7414</a> <a href="#">22330</a> <a href="#">305679</a>
<b>Gene Symbol:</b>	VCL
<b>Buffer:</b>	Liquid in 0.42% Potassium phosphate, 0.87% Sodium chloride, pH 7.3, 30% glycerol, and 0.01% sodium azide.
<b>Note:</b>	This product is for research use only.