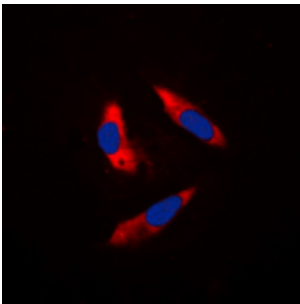
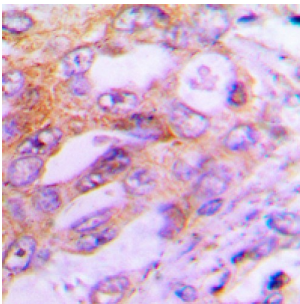
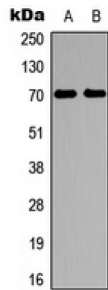


Abbexa Ltd, Innovation Centre, Cambridge Science Park, Cambridge, CB4 0EY, UK  
Telephone: +44 (0) 1223 755950 - Fax: +44 (0) 1223 755951 - E-Mail: info@abbexa.com

## Ribosomal Protein S6 Kinase Beta-1 (S6K1) Antibody

Catalogue No.: abx121722



S6K1 Antibody is a Rabbit Polyclonal against S6K1.

<b>Target:</b>	S6K1
<b>Reactivity:</b>	Human, Mouse, Rat, Chicken, Dog, Monkey, Pig, Rabbit
<b>Host:</b>	Rabbit
<b>Clonality:</b>	Polyclonal
<b>Tested Applications:</b>	WB, IHC, IF/ICC
<b>Recommended dilutions:</b>	WB: 1/500 - 1/1000, IHC: 1/100 - 1/200, IF/ICC: 1/100 - 1/500. Optimal dilutions/concentrations should be determined by the end user.
<b>Immunogen:</b>	KLH-conjugated synthetic peptide encompassing a sequence within the center region of human S6K1. The exact sequence is proprietary.

Abbexa Ltd, Innovation Centre, Cambridge Science Park, Cambridge, CB4 0EY, UK  
Telephone: +44 (0) 1223 755950 - Fax: +44 (0) 1223 755951 - E-Mail: [info@abbexa.com](mailto:info@abbexa.com)

<b>Purification:</b>	The antibody was purified by immunogen affinity chromatography.
<b>Form:</b>	Liquid
<b>Conjugation:</b>	Unconjugated
<b>Specificity:</b>	Recognizes endogenous levels of S6K1 protein.
<b>Storage:</b>	Aliquot and store at -20°C for one year. Avoid repeated freeze/thaw cycles.
<b>Swiss Prot:</b>	<a href="#">P23443</a> <a href="#">Q8BSK8</a> <a href="#">P67999</a>
<b>GeneID:</b>	<a href="#">6198</a> <a href="#">72508</a> <a href="#">83840</a>
<b>Gene Symbol:</b>	RPS6KB1
<b>Buffer:</b>	Liquid in 0.42% Potassium phosphate, 0.87% Sodium chloride, pH 7.3, 30% glycerol, and 0.01% sodium azide.
<b>Note:</b>	This product is for research use only.