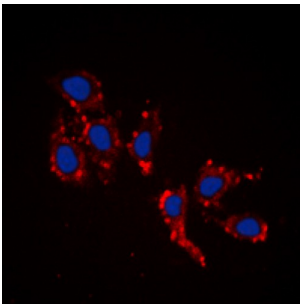
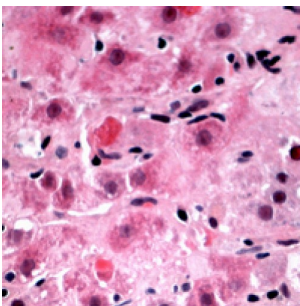
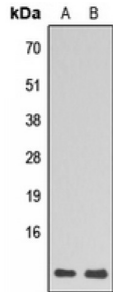


Abbexa Ltd, Innovation Centre, Cambridge Science Park, Cambridge, CB4 0EY, UK  
Telephone: +44 (0) 1223 755950 - Fax: +44 (0) 1223 755951 - E-Mail: info@abbexa.com

### Ribosomal Protein L39 (RPL39) Antibody

Catalogue No.: abx121714



RPL39 Antibody is a Rabbit Polyclonal against RPL39.

**Target:** RPL39

**Reactivity:** Human, Mouse, Rat, Cow, Chicken

**Host:** Rabbit

**Clonality:** Polyclonal

**Tested Applications:** WB, IHC, IF/ICC

**Recommended dilutions:** WB: 1/500 - 1/1000, IHC: 1/100 - 1/200, IF/ICC: 1/100 - 1/500. Optimal dilutions/concentrations should be determined by the end user.

**Immunogen:** KLH-conjugated synthetic peptide encompassing a sequence within the N-term region of human RPL39. The exact sequence is proprietary.

Abbexa Ltd, Innovation Centre, Cambridge Science Park, Cambridge, CB4 0EY, UK  
Telephone: +44 (0) 1223 755950 - Fax: +44 (0) 1223 755951 - E-Mail: [info@abbexa.com](mailto:info@abbexa.com)

<b>Purification:</b>	The antibody was purified by immunogen affinity chromatography.
<b>Form:</b>	Liquid
<b>Conjugation:</b>	Unconjugated
<b>Specificity:</b>	Recognizes endogenous levels of RPL39 protein.
<b>Storage:</b>	Aliquot and store at -20°C for one year. Avoid repeated freeze/thaw cycles.
<b>Swiss Prot:</b>	<a href="#">P62891</a> <a href="#">P62892</a> <a href="#">P62893</a>
<b>GeneID:</b>	<a href="#">6170</a> <a href="#">67248</a> <a href="#">25347</a>
<b>Gene Symbol:</b>	RPL39
<b>Buffer:</b>	Liquid in 0.42% Potassium phosphate, 0.87% Sodium chloride, pH 7.3, 30% glycerol, and 0.01% sodium azide.
<b>Note:</b>	This product is for research use only.