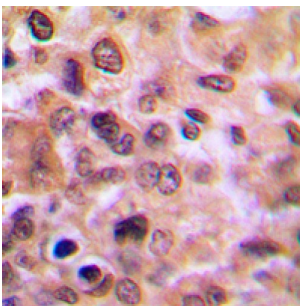
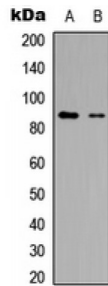


Chromosome 10 Open Reading Frame 28 (R3HCC1L) Antibody

Catalogue No.: abx121687



R3HCC1L Antibody is a Rabbit Polyclonal against R3HCC1L.

Target: R3HCC1L

Reactivity: Human, Mouse

Host: Rabbit

Clonality: Polyclonal

Tested Applications: WB, IHC

Recommended dilutions: WB: 1/500 - 1/1000, IHC: 1/100 - 1/200. Optimal dilutions/concentrations should be determined by the end user.

Immunogen: KLH-conjugated synthetic peptide encompassing a sequence within the C-term region of human R3HCC1L. The exact sequence is proprietary.

Purification: The antibody was purified by immunogen affinity chromatography.

Form: Liquid

Conjugation: Unconjugated

Specificity: Recognizes endogenous levels of R3HCC1L protein.

Abbexa Ltd, Innovation Centre, Cambridge Science Park, Cambridge, CB4 0EY, UK
Telephone: +44 (0) 1223 755950 - Fax: +44 (0) 1223 755951 - E-Mail: info@abbexa.com

Storage: Aliquot and store at -20°C for one year. Avoid repeated freeze/thaw cycles.

Swiss Prot: [Q7Z5L2](#) [Q8BJM3](#)

GeneID: [27291](#) [52013](#)

Gene Symbol: R3HCC1L

Buffer: Liquid in 0.42% Potassium phosphate, 0.87% Sodium chloride, pH 7.3, 30% glycerol, and 0.01% sodium azide.

Note: This product is for research use only.