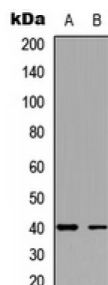


## Inward Rectifying Potassium Channel Protein TWIK-1 (TWIK1) Antibody

Catalogue No.: abx121659



Western blot analysis of TWIK1 expression in HeLa (A), A431 (B) whole cell lysates.

Rabbit polyclonal antibody against TWIK1.

**Target:** TWIK1

**Reactivity:** Human, Rabbit

**Host:** Rabbit

**Clonality:** Polyclonal

**Tested Applications:** WB

**Recommended dilutions:** WB: 1/500 - 1/1000. Optimal dilutions/concentrations should be determined by the end user.

**Immunogen:** KLH-conjugated synthetic peptide encompassing a sequence within the C-term region of human TWIK1. The exact sequence is proprietary.

**Purification:** The antibody was purified by immunogen affinity chromatography.

**Conjugation:** Unconjugated

**Storage:** Aliquot and store at -20 °C. Avoid repeated freeze/thaw cycles.

**Swiss Prot:** [O00180](#) [O08581](#) [Q9Z2T2](#)

**GeneID:** [3775](#) [16525](#) [59324](#)

**Buffer:** Liquid in 0.42% Potassium phosphate, 0.87% Sodium chloride, pH 7.3, 30% glycerol, and 0.01% sodium azide.

**Note:** This product is for research use only.