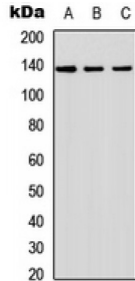


SH2 Domain-Containing Inositol 5'-Phosphatase 2 (SHIP2) Antibody

Catalogue No.: abx121658



Western blot analysis of SHIP2 expression in A549 (A), NS-1 (B), PC12 (C) whole cell lysates.

Rabbit polyclonal antibody against SHIP2.

Target: SHIP2

Reactivity: Human, Mouse, Rat, Pig

Host: Rabbit

Clonality: Polyclonal

Tested Applications: WB

Recommended dilutions: WB: 1/500 - 1/1000. Optimal dilutions/concentrations should be determined by the end user.

Immunogen: KLH-conjugated synthetic peptide encompassing a sequence within the center region of human SHIP2. The exact sequence is proprietary.

Purification: The antibody was purified by immunogen affinity chromatography.

Conjugation: Unconjugated

Storage: Aliquot and store at -20 °C. Avoid repeated freeze/thaw cycles.

Swiss Prot: [O15357](#) [Q6P549](#) [Q9WVR3](#)

GeneID: [3636](#) [16332](#) [65038](#)

Buffer: Liquid in 0.42% Potassium phosphate, 0.87% Sodium chloride, pH 7.3, 30% glycerol, and 0.01% sodium azide.

Note: This product is for research use only.