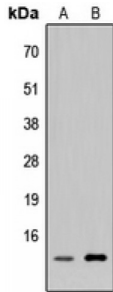
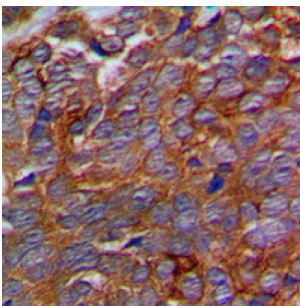


p311 Antibody

Catalogue No.: abx121539



Western blot analysis of p311 expression in HEK293T (A), H9C2 (B) whole cell lysates.



Immunohistochemical analysis of p311 staining in human prostate cancer formalin fixed paraffin embedded tissue section. The section was pre-treated using heat mediated antigen retrieval with sodium citrate buffer (pH 6.0). The section was then incubated with the antibody at room temperature and detected using an HRP conjugated compact polymer system. DAB was used as the chromogen. The section was then counterstained with haematoxylin and mounted with DPX.

Rabbit polyclonal antibody against p311.

- Target:** p311
- Reactivity:** Human, Rat, Monkey
- Host:** Rabbit
- Clonality:** Polyclonal
- Tested Applications:** WB, IHC
- Recommended dilutions:** WB: 1/500 - 1/1000, IHC: 1/100 - 1/200. Optimal dilutions/concentrations should be determined by the end user.
- Immunogen:** KLH-conjugated synthetic peptide encompassing a sequence within the center region of human p311. The exact sequence is proprietary.
- Purification:** The antibody was purified by immunogen affinity chromatography.
- Conjugation:** Unconjugated
- Storage:** Aliquot and store at -20 °C. Avoid repeated freeze/thaw cycles.
- Swiss Prot:** [Q16612](#) [Q07475](#) [Q80Z34](#)

Abbexa Ltd, Innovation Centre, Cambridge Science Park, Cambridge, CB4 0EY, UK
Telephone: +44 (0) 1223 755950 - Fax: +44 (0) 1223 755951 - E-Mail: info@abbexa.com

GeneID: [9315 27528 338475](#)

Buffer: Liquid in 0.42% Potassium phosphate, 0.87% Sodium chloride, pH 7.3, 30% glycerol, and 0.01% sodium azide.

Note: This product is for research use only.