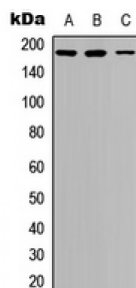


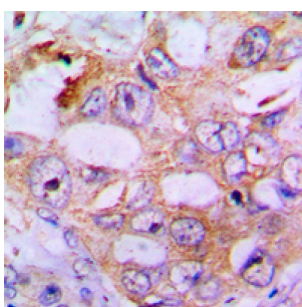
Abbexa Ltd, Innovation Centre, Cambridge Science Park, Cambridge, CB4 0EY, UK
Telephone: +44 (0) 1223 755950 - Fax: +44 (0) 1223 755951 - E-Mail: info@abbexa.com

IRS1 (pS636) Antibody

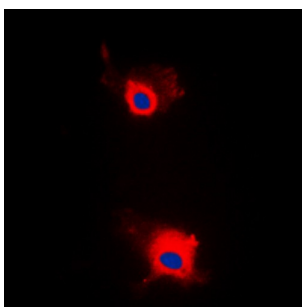
Catalogue No.: abx121433



Western blot analysis of IRS1 (pS636) expression in HeLa UV-treated (A), SHSY5Y (B), NIH3T3 (C) whole cell lysates.



Immunohistochemical analysis of IRS1 (pS636) staining in human lung cancer formalin fixed paraffin embedded tissue section. The section was pre-treated using heat mediated antigen retrieval with sodium citrate buffer (pH 6.0). The section was then incubated with the antibody at room temperature and detected using an HRP conjugated compact polymer system. DAB was used as the chromogen. The section was then counterstained with haematoxylin and mounted with DPX.



Immunofluorescent analysis of IRS1 (pS636) staining in MCF7 cells. Formalin-fixed cells were permeabilized with 0.1% Triton X-100 in TBS for 5-10 minutes and blocked with 3% BSA-PBS for 30 minutes at room temperature. Cells were probed with the primary antibody in 3% BSA-PBS and incubated overnight at 4 °C in a humidified chamber. Cells were washed with PBST and incubated with a DyLight 594-conjugated secondary antibody (red) in PBS at room temperature in the dark. DAPI was used to stain the cell nuclei (blue).

Rabbit polyclonal antibody against IRS1 (pS636).

Target: IRS1 (pS636)

Reactivity: Human, Mouse, Rat, Pig

Host: Rabbit

Clonality: Polyclonal

Tested Applications: WB, IHC, IF/ICC

Recommended dilutions: WB: 1/500 - 1/1000, IHC: 1/100 - 1/200, IF/ICC: 1/100 - 1/500. Optimal dilutions/concentrations should be determined by the end user.

Immunogen: KLH-conjugated synthetic peptide encompassing a sequence within the center region of human IRS1 (pS636). The exact sequence is proprietary.

Abbexa Ltd, Innovation Centre, Cambridge Science Park, Cambridge, CB4 0EY, UK
Telephone: +44 (0) 1223 755950 - Fax: +44 (0) 1223 755951 - E-Mail: info@abbexa.com

- Purification:** The antibody was purified by immunogen affinity chromatography.
- Conjugation:** Unconjugated
- Storage:** Aliquot and store at -20 °C. Avoid repeated freeze/thaw cycles.
- Swiss Prot:** [P35568](#) [P35569](#) [P35570](#)
- GeneID:** [3667](#) [16367](#) [25467](#)
- Buffer:** Liquid in 0.42% Potassium phosphate, 0.87% Sodium chloride, pH 7.3, 30% glycerol, and 0.01% sodium azide.
- Note:** This product is for research use only.