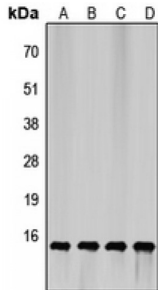
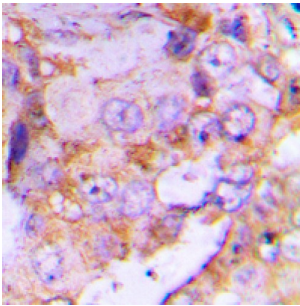


Eukaryotic Translation Initiation Factor 4E-Binding Protein 1 (4EBP1) Antibody

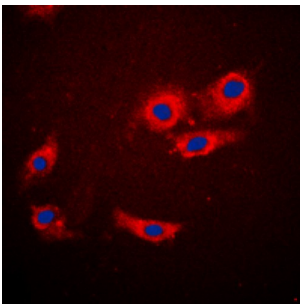
Catalogue No.: abx121370



Western blot analysis of 4EBP1 expression in HEK293T (A), HepG2 (B), mouse brain (C), rat liver (D) whole cell lysates.



Immunohistochemical analysis of 4EBP1 staining in human lung cancer formalin fixed paraffin embedded tissue section. The section was pre-treated using heat mediated antigen retrieval with sodium citrate buffer (pH 6.0). The section was then incubated with the antibody at room temperature and detected using an HRP conjugated compact polymer system. DAB was used as the chromogen. The section was then counterstained with haematoxylin and mounted with DPX.



Immunofluorescent analysis of 4EBP1 staining in MCF7 cells. Formalin-fixed cells were permeabilized with 0.1% Triton X-100 in TBS for 5-10 minutes and blocked with 3% BSA-PBS for 30 minutes at room temperature. Cells were probed with the primary antibody in 3% BSA-PBS and incubated overnight at 4 °C in a humidified chamber. Cells were washed with PBST and incubated with a DyLight 594-conjugated secondary antibody (red) in PBS at room temperature in the dark. DAPI was used to stain the cell nuclei (blue).

Rabbit polyclonal antibody against 4EBP1.

Target:	4EBP1
Reactivity:	Human, Mouse, Rat, Cow, Pig, Zebrafish
Host:	Rabbit
Clonality:	Polyclonal
Tested Applications:	WB, IHC, IF/ICC

Recommended dilutions: WB: 1/500 - 1/1000, IHC: 1/100 - 1/200, IF/ICC: 1/100 - 1/500. Optimal dilutions/concentrations should be determined by the end user.

Abbexa Ltd, Innovation Centre, Cambridge Science Park, Cambridge, CB4 0EY, UK
Telephone: +44 (0) 1223 755950 - Fax: +44 (0) 1223 755951 - E-Mail: info@abbexa.com

- Immunogen:** KLH-conjugated synthetic peptide encompassing a sequence within the N-term region of human 4EBP1. The exact sequence is proprietary.
- Purification:** The antibody was purified by immunogen affinity chromatography.
- Conjugation:** Unconjugated
- Storage:** Aliquot and store at -20 °C. Avoid repeated freeze/thaw cycles.
- Swiss Prot:** [Q13541](#) [Q60876](#) [Q62622](#)
- GenElD:** [1978](#) [13685](#) [116636](#)
- Buffer:** Liquid in 0.42% Potassium phosphate, 0.87% Sodium chloride, pH 7.3, 30% glycerol, and 0.01% sodium azide.
- Note:** This product is for research use only.