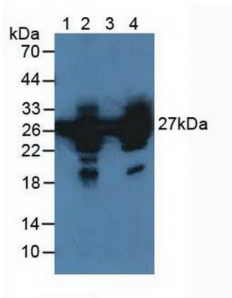


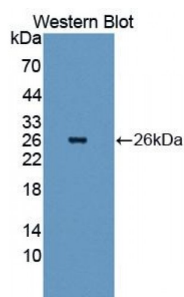
Abbexa Ltd, Innovation Centre, Cambridge Science Park, Cambridge, CB4 0EY, UK
Telephone: +44 (0) 1223 755950 - Fax: +44 (0) 1223 755951 - E-Mail: info@abbexa.com

Heat Shock 27 kDa Protein 1 (HSPB1) Antibody

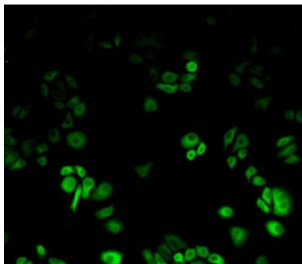
Catalogue No.: abx104872



Western blot analysis of (1) Bovine Serum, (2) Bovine Heart Tissue, (3) Human HeLa cells and (4) Bovine Skeletal Muscle Tissue.



Western blot analysis of recombinant Cow HSPB1.



IHC-P analysis of Human HeLa Cell, with FITC staining.

Heat Shock 27 kDa Protein 1 Antibody is a Rabbit Polyclonal against Heat Shock 27 kDa Protein 1.

Target: Heat Shock 27 kDa Protein 1 (HSPB1)

Reactivity: Cow

Host: Rabbit

Clonality: Polyclonal

Tested Applications: WB, IHC, IF/ICC, IP

Recommended dilutions: Optimal dilutions/concentrations should be determined by the end user.

Immunogen: HSPB1 (Met1-Lys201)

Abbexa Ltd, Innovation Centre, Cambridge Science Park, Cambridge, CB4 0EY, UK
Telephone: +44 (0) 1223 755950 - Fax: +44 (0) 1223 755951 - E-Mail: info@abbexa.com

Purification:	Antigen-specific affinity chromatography followed by Protein A affinity chromatography.
Form:	Liquid
Conjugation:	Unconjugated
Storage:	Store at 4 °C for frequent use. Aliquot and store at -20 °C for one year. Avoid repeated freeze/thaw cycles.
Swiss Prot:	<u>Q3T149</u>
Buffer:	0.01 M PBS, pH 7.4, containing 0.05% Proclin-300, 50% glycerol.
Note:	This product is for research use only.