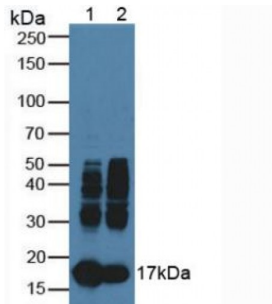


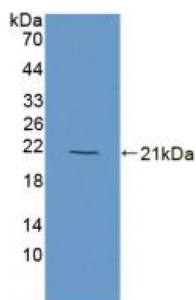
Abbexa Ltd, Innovation Centre, Cambridge Science Park, Cambridge, CB4 0EY, UK
Telephone: +44 (0) 1223 755950 - Fax: +44 (0) 1223 755951 - E-Mail: info@abbexa.com

Myoglobin (MYO) Antibody

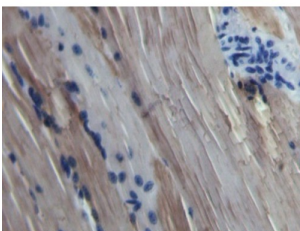
Catalogue No.: abx104806



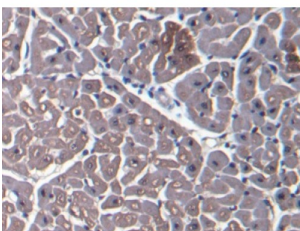
Western blot analysis of (1) Bovine Heart Tissue and (2) Bovine Skeletal Muscle Tissue.



Western blot analysis of recombinant Cow MYO.



IHC-P analysis of Sheep Skeletal muscle Tissue, with DAB staining.



IHC-P analysis of Bovine Cardiac Muscle Tissue, with DAB staining.

Myoglobin Antibody is a Rabbit Polyclonal antibody against Myoglobin (MYO).

Target: Myoglobin (MYO)

Reactivity: Cow

Host: Rabbit

Abbexa Ltd, Innovation Centre, Cambridge Science Park, Cambridge, CB4 0EY, UK
Telephone: +44 (0) 1223 755950 - Fax: +44 (0) 1223 755951 - E-Mail: info@abbexa.com

Clonality: Polyclonal

Tested Applications: WB, IHC, IF/ICC, IP

Recommended dilutions: WB: 1/100 - 1/400, IHC: 1/10 - 1/40, IF/ICC: 1/10 - 1/40. Optimal dilutions/concentrations should be determined by the end user.

Immunogen: [abx166312](#) - Recombinant MYO (Met1-Gly154) expressed in E. coli.

Purification: Antigen-specific affinity chromatography followed by Protein A affinity chromatography.

Form: Liquid

Isotype: IgG

Conjugation: Unconjugated

Storage: Store at 4 °C for frequent use. Aliquot and store at -20 °C for one year. Avoid repeated freeze/thaw cycles.

Buffer: 0.01 M PBS, pH 7.4, containing 0.05% Proclin-300, 50% glycerol.

Note: This product is for research use only.