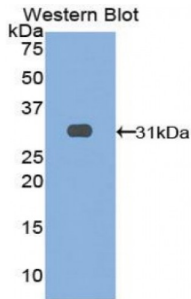


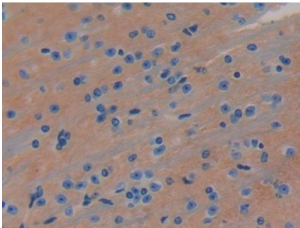
Abbexa Ltd, Innovation Centre, Cambridge Science Park, Cambridge, CB4 0EY, UK
 Telephone: +44 (0) 1223 755950 - Fax: +44 (0) 1223 755951 - E-Mail: info@abbexa.com

Leucine Rich Repeats And Immunoglobulin Like Domains Protein 3 (LRIG3) Antibody

Catalogue No.: abx104731



Western blot analysis of the recombinant protein.



IHC-P analysis of Mouse Brain Tissue, with DAB staining.

Polyclonal Antibody to Leucine Rich Repeats And Immunoglobulin Like Domains Protein 3 (LRIG3).

Target: Leucine Rich Repeats And Immunoglobulin Like Domains Protein 3 (LRIG3)

Reactivity: Mouse

Host: Rabbit

Clonality: Polyclonal

Tested Applications: WB, IHC, IF/ICC, IP

Recommended dilutions: WB: 0.5-2 µg/ml, IHC: 5-20 µg/ml, IF/ICC: 5-20 µg/ml. Optimal dilutions/concentrations should be determined by the end user.

Immunogen: [abx067760](#) - Recombinant LRIG3 (Asp866-Cys1110) expressed in E. coli

Purification: Antigen-specific affinity chromatography followed by Protein A affinity chromatography.

Form: Liquid

Conjugation: Unconjugated

Abbexa Ltd, Innovation Centre, Cambridge Science Park, Cambridge, CB4 0EY, UK
Telephone: +44 (0) 1223 755950 - Fax: +44 (0) 1223 755951 - E-Mail: info@abbexa.com

Storage: Store at 4 °C for frequent use. Aliquot and store at -20 °C for one year. Avoid repeated freeze/thaw cycles.

Swiss Prot: [Q6P1C6](#)

Buffer: 0.01 M PBS, pH 7.4, containing 0.05% Proclin-300, 50% glycerol.

Note: This product is for research use only.