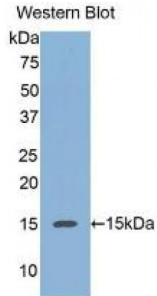


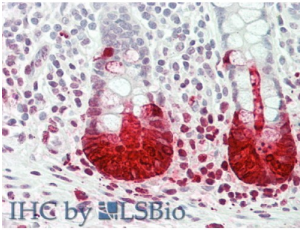
Abbexa Ltd, Innovation Centre, Cambridge Science Park, Cambridge, CB4 0EY, UK  
Telephone: +44 (0) 1223 755950 - Fax: +44 (0) 1223 755951 - E-Mail: info@abbexa.com

## Regenerating Islet Derived Protein 3 Alpha (REG3a) Antibody

Catalogue No.: abx104305



Western blot analysis of recombinant Human REG3a.



IHC-P analysis of Human Intestine Tissue, with HE staining.

Monoclonal Antibody to Regenerating Islet Derived Protein 3 Alpha (REG3a).

**Target:** Regenerating Islet Derived Protein 3 Alpha (REG3a)

**Reactivity:** Human

**Host:** Mouse

**Clonality:** Monoclonal

**Tested Applications:** WB, IHC, IF/ICC, IP

**Recommended dilutions:** Optimal dilutions/concentrations should be determined by the end user.

**Immunogen:** Cys40-Asn164

**Purification:** Protein A + Protein G affinity chromatography.

**Form:** Liquid

**Conjugation:** Unconjugated

**Storage:** Store at 4 °C for frequent use. Aliquot and store at -20 °C for one year. Avoid repeated freeze/thaw cycles.

Abbexa Ltd, Innovation Centre, Cambridge Science Park, Cambridge, CB4 0EY, UK  
Telephone: +44 (0) 1223 755950 - Fax: +44 (0) 1223 755951 - E-Mail: [info@abbexa.com](mailto:info@abbexa.com)

**Swiss Prot:** [Q06141](#)

**Buffer:** PBS, pH 7.4, containing 0.02% NaN<sub>3</sub>, 50% glycerol.

**Note:** This product is for research use only.