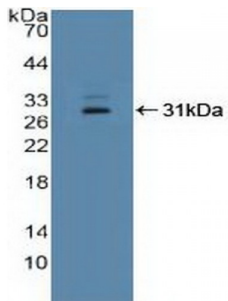
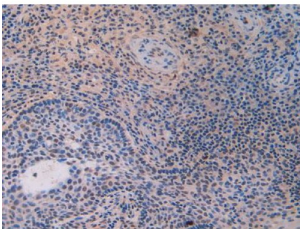


## Interferon Gamma Inducible Protein 16 (IFI16) Antibody

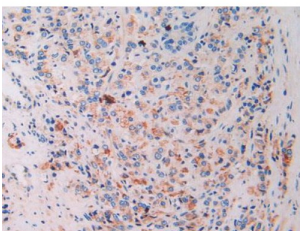
Catalogue No.: abx104026



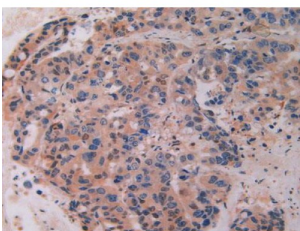
Western blot analysis of recombinant Human IFI16.



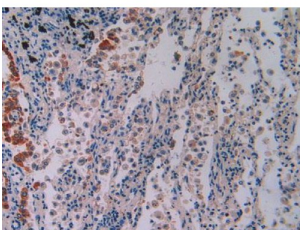
IHC-P analysis of Human Skin Cancer Tissue, with DAB staining.



IHC-P analysis of Human Prostate Gland Cancer Tissue, with DAB staining.



IHC-P analysis of Human Breast Cancer Tissue, with DAB staining.



IHC-P analysis of Human Lung Cancer Tissue, with DAB staining.

Polyclonal Antibody to Interferon Gamma Inducible Protein 16 (IFI16).

Abbexa Ltd, Innovation Centre, Cambridge Science Park, Cambridge, CB4 0EY, UK  
Telephone: +44 (0) 1223 755950 - Fax: +44 (0) 1223 755951 - E-Mail: [info@abbexa.com](mailto:info@abbexa.com)

**Target:** Interferon Gamma Inducible Protein 16 (IFI16)

**Reactivity:** Human

**Host:** Rabbit

**Clonality:** Polyclonal

**Tested Applications:** WB, IHC, IF/ICC, IP

**Recommended dilutions:** Optimal dilutions/concentrations should be determined by the end user.

**Immunogen:** IFI16 (Ser465-Cys671)

**Purification:** Antigen-specific affinity chromatography followed by Protein A affinity chromatography.

**Form:** Liquid

**Conjugation:** Unconjugated

**Storage:** Store at 4 °C for frequent use. Aliquot and store at -20 °C for one year. Avoid repeated freeze/thaw cycles.

**Buffer:** 0.01 M PBS, pH 7.4, containing 0.05% Proclin-300, 50% glycerol.

**Note:** This product is for research use only.