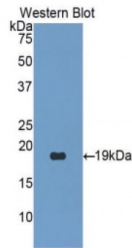


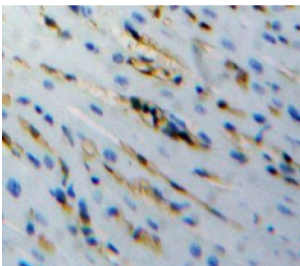
Abbexa Ltd, Innovation Centre, Cambridge Science Park, Cambridge, CB4 0EY, UK  
Telephone: +44 (0) 1223 755950 - Fax: +44 (0) 1223 755951 - E-Mail: info@abbexa.com

## Procollagen C Proteinase Enhancer 2 (PCPE2) Antibody

Catalogue No.: abx103861



Western blot analysis of the recombinant protein.



IHC-P analysis of stomach tissue, with DAB staining.

Polyclonal Antibody to Procollagen C Proteinase Enhancer 2 (PCPE2).

**Target:** Procollagen C Proteinase Enhancer 2 (PCPE2)

**Reactivity:** Human

**Host:** Rabbit

**Clonality:** Polyclonal

**Tested Applications:** WB, IHC, IF/ICC, IP

**Recommended dilutions:** Optimal dilutions/concentrations should be determined by the end user.

**Immunogen:** PCPE2 (Cys154-Pro269)

**Purification:** Antigen-specific affinity chromatography followed by Protein A affinity chromatography.

**Form:** Liquid

**Conjugation:** Unconjugated

**Storage:** Store at 4 °C for frequent use. Aliquot and store at -20 °C for one year. Avoid repeated freeze/thaw cycles.

Abbexa Ltd, Innovation Centre, Cambridge Science Park, Cambridge, CB4 0EY, UK  
Telephone: +44 (0) 1223 755950 - Fax: +44 (0) 1223 755951 - E-Mail: [info@abbexa.com](mailto:info@abbexa.com)

**Buffer:** PBS, pH 7.4, containing 0.02% NaN<sub>3</sub>, 50% glycerol.

**Note:** This product is for research use only.