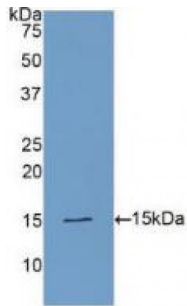
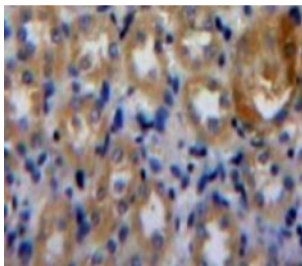


**Phospholipase A2 Activating Protein (PLAA) Antibody**

Catalogue No.: abx103746



Western blot analysis of recombinant Human PLAA.



IHC-P analysis of Kidney tissue, with DAB staining.

Polyclonal Antibody to Phospholipase A2 Activating Protein (PLAA).

**Target:** Phospholipase A2 Activating Protein (PLAA)**Reactivity:** Human**Host:** Rabbit**Clonality:** Polyclonal**Tested Applications:** WB, IHC, IF/ICC, IP**Recommended dilutions:** Optimal dilutions/concentrations should be determined by the end user.**Immunogen:** PLAA (Asp20-Cys143)**Purification:** Antigen-specific affinity chromatography followed by Protein A affinity chromatography.**Form:** Liquid**Conjugation:** Unconjugated**Storage:** Store at 4 °C for frequent use. Aliquot and store at -20 °C for one year. Avoid repeated freeze/thaw cycles.

Abbexa Ltd, Innovation Centre, Cambridge Science Park, Cambridge, CB4 0EY, UK  
Telephone: +44 (0) 1223 755950 - Fax: +44 (0) 1223 755951 - E-Mail: info@abbexa.com

**Swiss Prot:** [Q9Y263](#)

**Buffer:** 0.01 M PBS, pH 7.4, containing 0.05% Proclin-300, 50% glycerol.

**Note:** This product is for research use only.