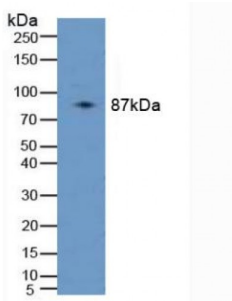
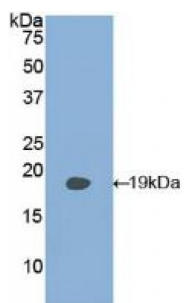


Phospholipase A2 Activating Protein (PLAA) Antibody

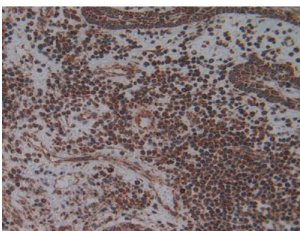
Catalogue No.: abx103745



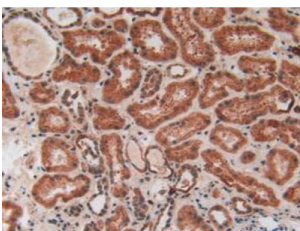
Western blot analysis of Human 293T Cells.



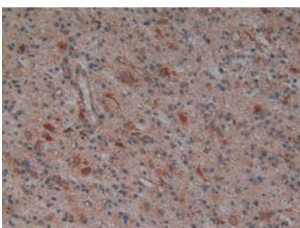
Western blot analysis of recombinant Human PLAA.



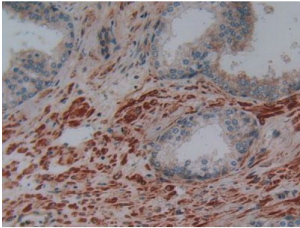
IHC-P analysis of Human Skin Cancer Tissue, with DAB staining.



IHC-P analysis of Human Kidney Tissue, with DAB staining.



IHC-P analysis of Human Glioma Tissue, with DAB staining.



IHC-P analysis of Human Prostate Gland Tissue, with DAB staining.

Polyclonal Antibody to Phospholipase A2 Activating Protein (PLAA).

Target: Phospholipase A2 Activating Protein (PLAA)

Reactivity: Human

Host: Rabbit

Clonality: Polyclonal

Tested Applications: WB, IHC, IF/ICC, IP

Recommended dilutions: Optimal dilutions/concentrations should be determined by the end user.

Immunogen: PLAA (Glu162-Ala312)

Purification: Antigen-specific affinity chromatography followed by Protein A affinity chromatography.

Form: Liquid

Conjugation: Unconjugated

Storage: Store at 4 °C for frequent use. Aliquot and store at -20 °C for one year. Avoid repeated freeze/thaw cycles.

Swiss Prot: [Q9Y263](#)

Buffer: 0.01 M PBS, pH 7.4, containing 0.05% Proclin-300, 50% glycerol.

Note: This product is for research use only.