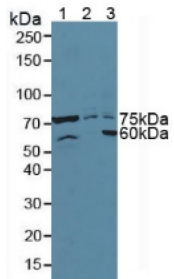


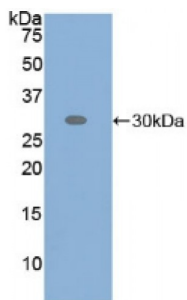
Abbexa Ltd, Innovation Centre, Cambridge Science Park, Cambridge, CB4 0EY, UK  
Telephone: +44 (0) 1223 755950 - Fax: +44 (0) 1223 755951 - E-Mail: info@abbexa.com

### Activating Transcription Factor 6 (ATF6) Antibody

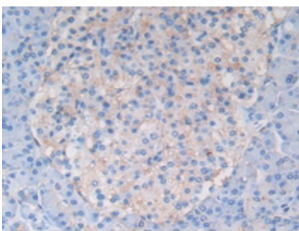
Catalogue No.: abx103395



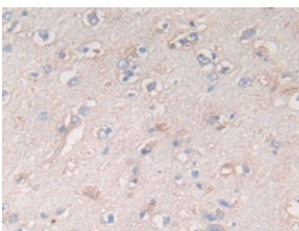
Western blot analysis of (1) Mouse Pancreas Tissue, (2) Human HeLa cells and (3) Human 293T Cells.



Western blot analysis of recombinant Human ATF6.



IHC-P analysis of Human Pancreas Tissue, with DAB staining.



IHC-P analysis of Human Brain Tissue, with DAB staining.

Polyclonal Antibody to Activating Transcription Factor 6 (ATF6).

**Target:** Activating Transcription Factor 6 (ATF6)

**Reactivity:** Human

**Host:** Rabbit

Abbexa Ltd, Innovation Centre, Cambridge Science Park, Cambridge, CB4 0EY, UK  
Telephone: +44 (0) 1223 755950 - Fax: +44 (0) 1223 755951 - E-Mail: info@abbexa.com

**Clonality:** Polyclonal

**Tested Applications:** WB, IHC, IF/ICC, IP

**Recommended dilutions:** Optimal dilutions/concentrations should be determined by the end user.

**Immunogen:** ATF6 (Ala423-Asn646)

**Purification:** Antigen-specific affinity chromatography followed by Protein A affinity chromatography.

**Form:** Liquid

**Conjugation:** Unconjugated

**Storage:** Store at 4 °C for frequent use. Aliquot and store at -20 °C for one year. Avoid repeated freeze/thaw cycles.

**Buffer:** 0.01 M PBS, pH 7.4, containing 0.05% Proclin-300, 50% glycerol.

**Note:** This product is for research use only.