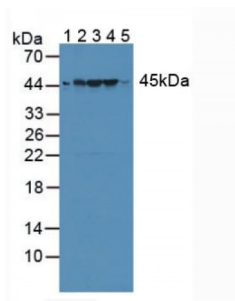


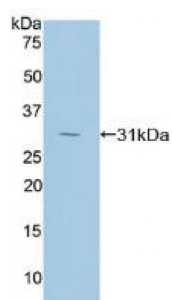
Abbexa Ltd, Innovation Centre, Cambridge Science Park, Cambridge, CB4 0EY, UK  
Telephone: +44 (0) 1223 755950 - Fax: +44 (0) 1223 755951 - E-Mail: info@abbexa.com

### Ribonuclease Inhibitor (RI) Antibody

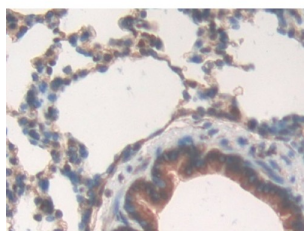
Catalogue No.: abx102051



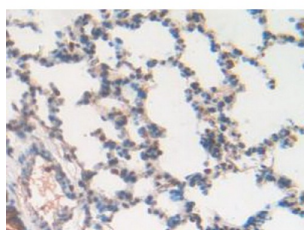
Western blot analysis of (1) Rat Serum, (2) Rat Liver Tissue, (3) Rat Heart Tissue, (4) Rat Brain Tissue and (5) Human Jurkat Tissue.



Western blot analysis of recombinant Rat RI.



IHC-P analysis of Rat Lung Tissue, with DAB staining.



IHC-P analysis of Rat Lung Tissue, with DAB staining.

Polyclonal Antibody to Ribonuclease Inhibitor (RI).

**Target:** Ribonuclease Inhibitor (RI)

**Reactivity:** Rat

**Host:** Rabbit

Abbexa Ltd, Innovation Centre, Cambridge Science Park, Cambridge, CB4 0EY, UK  
Telephone: +44 (0) 1223 755950 - Fax: +44 (0) 1223 755951 - E-Mail: info@abbexa.com

**Clonality:** Polyclonal

**Tested Applications:** WB, IHC, IF/ICC, IP

**Recommended dilutions:** Optimal dilutions/concentrations should be determined by the end user.

**Immunogen:** RI (Ser108-Lys358)

**Purification:** Antigen-specific affinity chromatography followed by Protein A affinity chromatography.

**Form:** Liquid

**Conjugation:** Unconjugated

**Storage:** Store at 4 °C for frequent use. Aliquot and store at -20 °C for one year. Avoid repeated freeze/thaw cycles.

**Buffer:** 0.01 M PBS, pH 7.4, containing 0.05% Proclin-300, 50% glycerol.

**Note:** This product is for research use only.