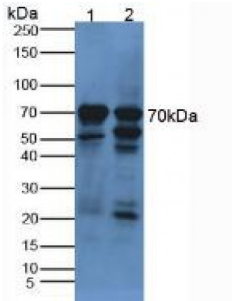


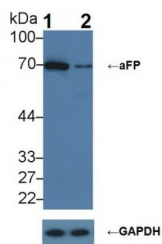
Abbexa Ltd, Innovation Centre, Cambridge Science Park, Cambridge, CB4 0EY, UK
Telephone: +44 (0) 1223 755950 - Fax: +44 (0) 1223 755951 - E-Mail: info@abbexa.com

Alpha-Fetoprotein (aFP) Antibody

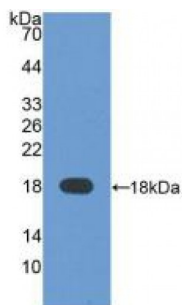
Catalogue No.: abx101417



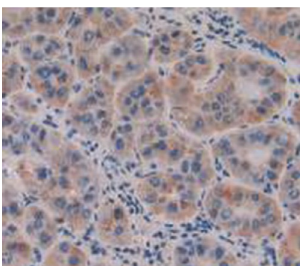
Western blot analysis of (1) Human Liver Tissue and (2) Human Lung Tissue.



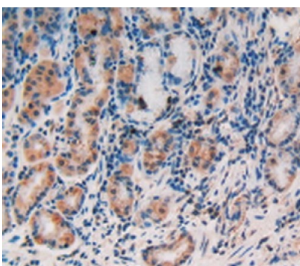
Western blot analysis of (1) Wild-type HepG2 cell lysate, and (2) aFP knockout HepG2 cell lysate, using Rabbit Anti-Human aFP Antibody (2 µg/ml) and HRP-conjugated Goat Anti-Mouse antibody ([abx400001](#), 0.2 µg/ml).



Western blot analysis of recombinant Human aFP.

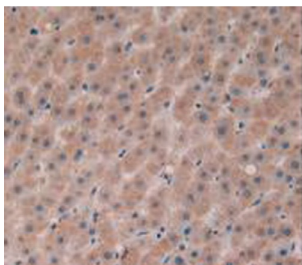


IHC-P analysis of Human Liver Cancer Tissue, with DAB staining.



IHC-P analysis of Human Stomach Tissue, with DAB staining.

Abbexa Ltd, Innovation Centre, Cambridge Science Park, Cambridge, CB4 0EY, UK
Telephone: +44 (0) 1223 755950 - Fax: +44 (0) 1223 755951 - E-Mail: info@abbexa.com



IHC-P analysis of Human Liver Tissue, with DAB staining.

Polyclonal Antibody to Alpha-Fetoprotein (aFP).

Target: Alpha-Fetoprotein (aFP)

Reactivity: Human

Host: Rabbit

Clonality: Polyclonal

Tested Applications: WB, IHC, IF/ICC, IP

Recommended dilutions: Optimal dilutions/concentrations should be determined by the end user.

Immunogen: aFP (Ile31-Pro171)

Purification: Antigen-specific affinity chromatography followed by Protein A affinity chromatography.

Form: Liquid

Conjugation: Unconjugated

Storage: Store at 4 °C for frequent use. Aliquot and store at -20 °C for one year. Avoid repeated freeze/thaw cycles.

Swiss Prot: [P27435](#)

Buffer: 0.01 M PBS, pH 7.4, containing 0.05% Proclin-300, 50% glycerol.

Note: This product is for research use only.