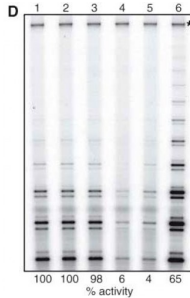


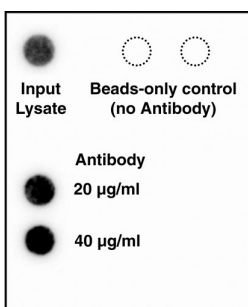
Abbexa Ltd, Innovation Centre, Cambridge Science Park, Cambridge, CB4 0EY, UK
 Telephone: +44 (0) 1223 755950 - Fax: +44 (0) 1223 755951 - E-Mail: info@abbexa.com

hTERT Antibody and Peptide Kit

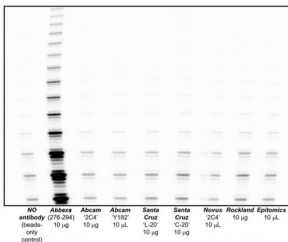
Catalogue No.: abx098300



HEK-293T telomerase Over-Expressing Cell Pellets express high levels of detectable telomerase activity. These suspension HEK-293T cells are transiently transfected with plasmid DNA encoding hTERT, hTR, and dyskerin leading to several-hundred fold higher levels of enzymatic activity. In this figure, the hTERT Antibody and Peptide kit was used to immunoprecipitate telomerase expressed in these cells. After transient transfection, cell aliquots were removed over time for analysis of their telomerase activity with a direct activity assay. E: untransfected, endogenous activity— arrows indicate the first three telomeric repeats Lanes 3 - 7: activity at days 3 -7 post-transfection.



hTERT antibody QC by northern analysis. The hTERT Antibody was assessed by immunoprecipitation against the hTERT protein component of telomerase (a protein-RNA enzyme complex) from HEK-293 tumour cell lysates, followed by a 1 hr elution in the presence of antigenic peptide; the amount of telomerase recovered was quantitated by probing (northern) for the hTR, the RNA component of telomerase, present as a 1:1 complex with the hTERT protein.



Comparison of the hTERT antibody (Abbexa 276-294) to commercially available antibodies for the immunoprecipitation of telomerase from human cell lysate. Antibodies and their commercial vendor are described.

The hTERT antibody is a sheep anti-human polyclonal which provides superior telomerase immunoprecipitation. This kit contains a solution of antigenic release peptide to facilitate dissociation of the hTERT antibody resulting in elution of telomerase after immunoprecipitation. The kit includes 100 µg of antibody and 125 µl of peptide. Find more information in the Nature publication, <http://www.nature.com/ncomms/2015/150709/ncomms8643/pdf/ncomms8643.pdf>. The working concentration for the antibody is approximately 20 µg of antibody per ml of lysate and for the peptide 25 µl peptide per 20 µg antibody (corresponds to 20 molar equivalents of peptide per antibody).

Notes: Based on immunoprecipitation of telomerase from HEK-293 tumour cell lysates, followed by a 1 hr elution in the presence of antigenic peptide, if available. There are no existing peptide antigens for the Calbiochem, Novus, Abcam, Rockland or Epitomics antibodies. Background activity in control represents non-specific adhesion to Protein G-Agarose beads. Find more information in the *Nature Communications* publication, <http://www.nature.com/ncomms/2015/150709/ncomms8643/pdf/ncomms8643.pdf>.

Target: hTERT Antibody and Peptide Kit

Abbexa Ltd, Innovation Centre, Cambridge Science Park, Cambridge, CB4 0EY, UK
Telephone: +44 (0) 1223 755950 - Fax: +44 (0) 1223 755951 - E-Mail: info@abbexa.com

Conjugation: Unconjugated

Storage: Aliquot and store at -20 °C or -80 °C. Avoid repeated freeze/thaw cycles.

Swiss Prot: [O14746](#) [Q8N6C3](#) [Q8NG46](#)

GeneID: [7015](#)

Gene Symbol: TERT

Concentration: Antibody: 1 mg/ml. Peptide: 100 µM of peptide in 150 µl aliquots.

Buffer: Antibody: 10 mM HEPES-KOH (pH 8), 100 mM KCl, 0.05 w/v NaN₃, 10% v/v glycerol. Peptide: H₂O with 10% v/v glycerol + 0.05% w/v NaN₃.

Note: HEK-293T Telomerase Over –Expressing Cell Pellets “Licensed Products” may be subject of proprietary know how and one or more pending or granted patent applications, and are provided under license to Abbexa Ltd. The purchaser of Licensed Products is granted a non-exclusive, limited right to use the Licensed Products only for research purposes. Such license specifically excludes (i) the right to sell or otherwise transfer Licensed Products to third parties; (ii) use of Licensed Products for any diagnostic or therapeutic purpose; (iii) any use other than use in non-human animals or in vitro experiments. No right or license to perform commercial services of any kind using the Licensed Products, including without limitation reporting the results of recipient's activities for a fee or other commercial consideration, is hereby conveyed by the purchase of Licensed Products expressly, or by implication. Any use of Licensed Products other than for research purposes requires a license from the Children's Medical Research Institute (NSW, Australia). For license information, please contact a Bio-Link Australia licensing representative by e-mail at [Bio-link](#).