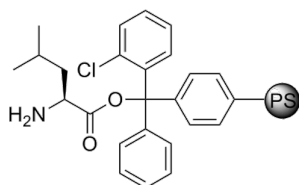


Abbexa Ltd, Innovation Centre, Cambridge Science Park, Cambridge, CB4 0EY, UK
Telephone: +44 (0) 1223 755950 - Fax: +44 (0) 1223 755951 - E-Mail: info@abbexa.com

H-L-Leu-2-Cl-Trityl resin

Catalogue No.: abx095092



H-L-Leu-2-Cl-Trityl resin is a preloaded 2-Chlorotrityl resin for use in peptide synthesis.

Other sizes are available for this product. Email us at info@abbexa.com for details.

Target: Preloaded 2-Chlorotrityl resins (L)

Note: This product is for research use only.