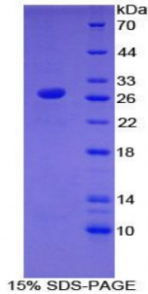


Human Toll Like Receptor 6 (TLR6) Protein

Catalogue No.: abx069371



SDS-PAGE analysis of Human Toll Like Receptor 6 Protein.

Recombinant Toll Like Receptor 6 (TLR6) is a recombinant protein from Human. It is produced in E.coli using Prokaryotic expression.

Target: Toll Like Receptor 6 (TLR6)

Origin: Human

Host: E. coli

Tested Applications: ELISA, WB, IP, SDS-PAGE

Purity: > 95%

Form: Lyophilized

Conjugation: Unconjugated

Storage: Store at 2-8 °C for up to one month. Store at -80 °C for up to one year. Avoid repeated freeze/thaw cycles.

Expression: Recombinant

Molecular Weight: 26.5 kDa

Swiss Prot: [Q9Y2C9](#)

Sequence Fragment: Tyr608-Ser796

Sequence: MGSSHHHHHH SSGLVPRGSH MASMTGGQQM GRGSEF- YLD LPWYLRMVCQ WTQTRRRARN
IPLEELQRNL QFHAFISYSE HDSAWVKSEL VPYLEKEDIQ ICLHERNFVP GKSIVENIIN CIEKSYKSIF
VLSPNFVQSE WCHYELYFAH HNFLHEGSNN LILILLEPIP QNSIPNKYHK LKALMTQRTY
LQWPKEKSKR GLFWANIRAA FNMKLLVTE NNDVKS

Abbexa Ltd, Innovation Centre, Cambridge Science Park, Cambridge, CB4 0EY, UK
Telephone: +44 (0) 1223 755950 - Fax: +44 (0) 1223 755951 - E-Mail: info@abbexa.com

Tag: Two N-terminal tags, His-tag and T7-tag

Activity: Not tested

Concentration: Prior to lyophilization: 200 µg/ml

Buffer: Prior to lyophilization: PBS, pH 7.4, containing 0.01% Sarcosyl, 1 mM DTT, 5% Trehalose and Proclin-300.

Note: This product is for research use only.