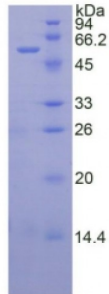


Abbexa Ltd, Innovation Centre, Cambridge Science Park, Cambridge, CB4 0EY, UK
Telephone: +44 (0) 1223 755950 - Fax: +44 (0) 1223 755951 - E-Mail: info@abbexa.com

Human Tissue Factor Pathway Inhibitor (TFPI) Protein

Catalogue No.: abx069322



SDS-PAGE analysis of Human TFPI Protein.

Recombinant Tissue Factor Pathway Inhibitor (TFPI) is a recombinant protein from Human. It is produced in E.coli using Prokaryotic expression.

Target: Tissue Factor Pathway Inhibitor (TFPI)

Origin: Human

Host: E. coli

Tested Applications: ELISA, WB, IP, SDS-PAGE

Purity: > 95%

Form: Lyophilized

Conjugation: Unconjugated

Storage: Store at 2-8 °C for up to one month. Store at -80 °C for up to one year. Avoid repeated freeze/thaw cycles.

Expression: Recombinant

Molecular Weight: 57.6 kDa

Swiss Prot: [P10646](#)

Sequence Fragment: Asp29-Cys251

Abbexa Ltd, Innovation Centre, Cambridge Science Park, Cambridge, CB4 0EY, UK
Telephone: +44 (0) 1223 755950 - Fax: +44 (0) 1223 755951 - E-Mail: info@abbexa.com

Sequence: MSPILGYWKI KGLVQPTRLR LEYLEEKYEE HLYERDEGDK WRNKKFELGL EFPNLPYYID
GDVKLTQSMA IIRYIADKHN MLGGCPKERA EISMLEGAVL DIRYGVSRIA YSKDFETLKV
DFLSKLPEML KMFEDRLCHK TYLNGDHVTH PDFMLYDALD VVLYMDPMCL DAFPKLVCFK
KRIEAIQID KYLKSSKYIA WPLQGQWQATF GGGDHPPKSD GSTSGSGHHH HHHSAGLVPR
GSTAIGMKET AAKFERQHM DSPDLGTLEV LFQGPLGSEF- DS EEDEEHTIIT DTELPPLKLM
HSFCAFKADD GPCKAIMKRF FFNIFTRQCE EFIYGGCEGN QNRFESLEEC KKMCTRDNAN
RIIKTTLQQE KPDFCFLEED PGICRGYITR YFYNNQTKQC ERFKYGGCLG NMNNFETLEE
CKNICEDGPN GFQVDNYGTQ LNAVNSLTP QSTKVPSLFV TKEGTNDGWK NAAHIYQVFL
NAFCIHASMF FLGLDSISCL C

Tag: Two N-terminal tags, His-tag and GST-tag

Activity: Not tested

Concentration: Prior to lyophilization: 200 µg/ml

Buffer: Prior to lyophilization: 100 mM NaHCO₃, 500 mM NaCl, pH 8.3, containing 1 mM EDTA, 1 mM DTT,
0.01% Sarcosyl, 5% Trehalose and Proclin-300.

Note: This product is for research use only.