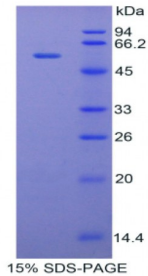


Abbexa Ltd, Innovation Centre, Cambridge Science Park, Cambridge, CB4 0EY, UK
Telephone: +44 (0) 1223 755950 - Fax: +44 (0) 1223 755951 - E-Mail: info@abbexa.com

Rabbit Tissue Factor Pathway Inhibitor (TFPI) Protein

Catalogue No.: abx069320



SDS-PAGE analysis of Rabbit TFPI Protein.

Recombinant Tissue Factor Pathway Inhibitor (TFPI) is a recombinant protein from Rabbit. It is produced in E.coli using Prokaryotic expression.

Target: Tissue Factor Pathway Inhibitor (TFPI)

Origin: Rabbit

Host: E. coli

Tested Applications: ELISA, WB, IP, SDS-PAGE

Purity: > 95%

Form: Lyophilized

Conjugation: Unconjugated

Storage: Store at 2-8 °C for up to one month. Store at -80 °C for up to one year. Avoid repeated freeze/thaw cycles.

Expression: Recombinant

Molecular Weight: 54.2 kDa

Swiss Prot: [P19761](#)

Sequence Fragment: Lys39-Gly275

Abbexa Ltd, Innovation Centre, Cambridge Science Park, Cambridge, CB4 0EY, UK
Telephone: +44 (0) 1223 755950 - Fax: +44 (0) 1223 755951 - E-Mail: info@abbexa.com

Sequence: MRNKKFELGL EFPNLPYYID GDVKLTQSMA IIRYIADKHN MLGGCPKERA EISMLEGAVL
DIRYGVSRIA YSKDFETLKV DFLSKLPEML KMFEDRLCHK TYLNGDHVTH PDFMLYDALD
VVLYMDPMCL DAFPKLVCFK KRIEAIQID KYLKSSKYIA WPLQGQWQATF GGGDHPPKSD
GSTSGSGHHH HHSAGLVPR GSTAIGMKET AAACFERQHM DSPDLGTLEV LFQGPLGSEF-KP
PLQKPTHSFC AMKVDDGPCR AYIKRFFFNI LTHQCEEFYI GGCEGNENRF ESLEECKEKC
ARDYPKMTTK LTFQKGKPDF CFLEEDPGIC RGYITRYFYN NQSKQCERFK YGGCLGNLNN
FESLEECKNT CENPTSDFQV DDHRTLQNTV NNTLINQPTK APRRWAFHGP SWCLPPADRG
LCQANEIRFF YNAIIGKCRP FKYSGCGGNE NNFTSKKACI TACKKGFIPK SIKGG

Tag: Two N-terminal tags, His-tag and GST-tag

Activity: Not tested

Concentration: Prior to lyophilization: 200 µg/ml

Buffer: Prior to lyophilization: PBS, pH 7.4, containing 0.01% Sarcosyl, 1 mM DTT, 5% Trehalose and Proclin-300.

Note: This product is for research use only.