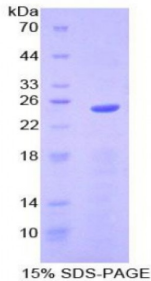


## Mouse Sprouty Homolog 2 (SPRY2) Protein

Catalogue No.: abx069156



SDS-PAGE analysis of Mouse Sprouty Homolog 2 Protein.

Recombinant Sprouty Homolog 2 (SPRY2) is a recombinant protein from Mouse. It is produced in E.coli using Prokaryotic expression.

**Target:** Sprouty Homolog 2 (SPRY2)

**Origin:** Mouse

**Host:** E. coli

**Tested Applications:** ELISA, WB, IP, SDS-PAGE

**Purity:** > 95%

**Form:** Lyophilized

**Conjugation:** Unconjugated

**Storage:** Store at 2-8 °C for up to one month. Store at -80 °C for up to one year. Avoid repeated freeze/thaw cycles.

**Expression:** Recombinant

**Molecular Weight:** 24.6 kDa

**Swiss Prot:** [Q9QXV8](#)

**Sequence Fragment:** Gly116-Thr305

**Sequence:** MGSSHHHHHH SGLVPRGSH MASMTGGQQM GRGSEF- GSRSS TRTSTSSSSS EQRLLGPSFS  
HGPAAADGII RVQPKSELKP GDVKPLSKDD LGLHAYRCED CGKCKCKECT YPRPLPSDWI  
CDKQCLCSAQ NVIDYGTCVC CVKGLFYHCS NDDEDNCADN PCSCSQSHCC TRWSAMGVMS  
LFLPCLWCYL PAKGCLKLCQ GCYDRVNRPG CRCKNSNTVC CKVPT

Abbexa Ltd, Innovation Centre, Cambridge Science Park, Cambridge, CB4 0EY, UK  
Telephone: +44 (0) 1223 755950 - Fax: +44 (0) 1223 755951 - E-Mail: info@abbexa.com

**Tag:** Two N-terminal tags, His-tag and T7-tag

**Activity:** Not tested

**Concentration:** Prior to lyophilization: 200 µg/ml

**Buffer:** Prior to lyophilization: PBS, pH 7.4, containing 0.01% Sarcosyl, 1 mM DTT, 5% Trehalose and Proclin-300.

**Note:** This product is for research use only.