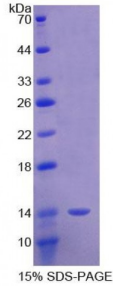


Abbexa Ltd, Innovation Centre, Cambridge Science Park, Cambridge, CB4 0EY, UK  
Telephone: +44 (0) 1223 755950 - Fax: +44 (0) 1223 755951 - E-Mail: info@abbexa.com

## Mouse Semaphorin 3E (SEMA3E) Protein

Catalogue No.: abx069024



SDS-PAGE analysis of Mouse Semaphorin 3E Protein.

Recombinant Semaphorin 3E (SEMA3E) is a recombinant protein from Mouse. It is produced in E.coli using Prokaryotic expression.

**Target:** Semaphorin 3E (SEMA3E)

**Origin:** Mouse

**Host:** E. coli

**Tested Applications:** ELISA, WB, IP, SDS-PAGE

**Purity:** > 95%

**Form:** Lyophilized

**Conjugation:** Unconjugated

**Storage:** Store at 2-8 °C for up to one month. Store at -80 °C for up to one year. Avoid repeated freeze/thaw cycles.

**Expression:** Recombinant

**Molecular Weight:** 11.9 kDa

**Swiss Prot:** [P70275](#)

**Sequence Fragment:** Ala581-Thr669

**Sequence:** MGHSHHHHSGSEF-ALDRTEERLA YGIESNSTLL ECTPRSLQAK VIWVQKGRD VRKEEVKTDD  
RVVKMDLGLL FLRVRKSDAG TYFCQTVEHN FVHTVRKIT

**Tag:** N-terminal His-tag

Abbexa Ltd, Innovation Centre, Cambridge Science Park, Cambridge, CB4 0EY, UK  
Telephone: +44 (0) 1223 755950 - Fax: +44 (0) 1223 755951 - E-Mail: info@abbexa.com

**Activity:** Not tested

**Concentration:** Prior to lyophilization: 200 µg/ml

**Buffer:** Prior to lyophilization: PBS, pH 7.4, containing 0.01% Sarcosyl, 1 mM DTT, 5% Trehalose and Proclin-300.

**Note:** This product is for research use only.