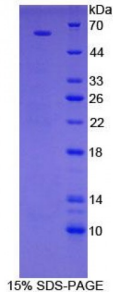


Abbexa Ltd, Innovation Centre, Cambridge Science Park, Cambridge, CB4 0EY, UK
Telephone: +44 (0) 1223 755950 - Fax: +44 (0) 1223 755951 - E-Mail: info@abbexa.com

Human Ribosomal Protein S6 Kinase Beta 2 (RPS6Kb2) Protein

Catalogue No.: abx068934



SDS-PAGE analysis of Human RPS6Kb2 Protein.

Recombinant Ribosomal Protein S6 Kinase Beta 2 (RPS6Kb2) is a recombinant protein from Human. It is produced in E.coli using Prokaryotic expression.

Target: Ribosomal Protein S6 Kinase Beta 2 (RPS6Kb2)

Origin: Human

Host: E. coli

Tested Applications: ELISA, WB, IP, SDS-PAGE

Purity: > 95%

Form: Lyophilized

Conjugation: Unconjugated

Storage: Store at 2-8 °C for up to one month. Store at -80 °C for up to one year. Avoid repeated freeze/thaw cycles.

Expression: Recombinant

Molecular Weight: 61.6 kDa

Swiss Prot: [Q9UBS0](#)

Sequence Fragment: Asp194-Pro453

Abbexa Ltd, Innovation Centre, Cambridge Science Park, Cambridge, CB4 0EY, UK
Telephone: +44 (0) 1223 755950 - Fax: +44 (0) 1223 755951 - E-Mail: info@abbexa.com

Sequence: MSPILGYWKI KGLVQPTRL L LEYLEEKYEE HLYERDEGDK WRNKKFELGL EFPNLPPYYID
GDVCLTQSMA IIRYIADKHN MLGGCPKERA EISMLEGAVL DIRYGVSRIA YSKDFETLKV
DFLSKLPEML KMFEDRLCHK TYLNGDHVTH PDFMLYDALD VVLYMDPMCL DAFPKLVCFK
KRIEAIQID KYLKSSKYIA WPLQGWQATF GGGDHPPKSD GSTSGSGHHH HHSAGLVPR
GSTAIGMKET AAKFERQHM DSPDLGTGGG SGIEGRGSMG YRGSEF-DLKPENI MLSSQGHKIL
TDFGLCKESI HEGAVTHTFC GTIEYMAPEI LVRSGHNRV DWWSLGALMY DMLTGSPPF
AENRKKTMDK IIRGKLALPP YLTPDARDLV KKFLKRNPQS RIGGGPGDAA DVQRHPFFRH
MNWDDLAWR VDPPFRPCLQ SEEDVSQFDT RFTRQTPVDS PDDTALSESQAQAFLGFTYV
APSVLDSIKE GFSFQPKLRS PRRLNSSPRA PVSPLKFSPF EGFRPSPSLP EPTLPLPLPL LPP

Tag: Two N-terminal tags, His-tag and GST-tag

Activity: Not tested

Concentration: Prior to lyophilization: 200 µg/ml

Buffer: Prior to lyophilization: PBS, pH 7.4, containing 0.01% Sarcosyl, 1 mM DTT, 5% Trehalose and Proclin-300.

Note: This product is for research use only.