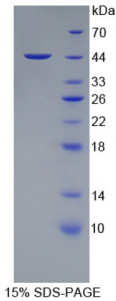


Abbexa Ltd, Innovation Centre, Cambridge Science Park, Cambridge, CB4 0EY, UK
Telephone: +44 (0) 1223 755950 - Fax: +44 (0) 1223 755951 - E-Mail: info@abbexa.com

Human Protein Tyrosine Phosphatase Receptor Type C (PTPRC) Protein

Catalogue No.: abx068771



SDS-PAGE analysis of Human PTPRC Protein.

Recombinant Protein Tyrosine Phosphatase Receptor Type C (PTPRC) is a recombinant protein from Human. It is produced in E.coli using Prokaryotic expression.

Target: Protein Tyrosine Phosphatase Receptor Type C (PTPRC)

Origin: Human

Host: E. coli

Tested Applications: ELISA, WB, IP, SDS-PAGE

Purity: > 95%

Form: Lyophilized

Conjugation: Unconjugated

Storage: Store at 2-8 °C for up to one month. Store at -80 °C for up to one year. Avoid repeated freeze/thaw cycles.

Expression: Recombinant

Molecular Weight: 45.1 kDa

Swiss Prot: [P08575](#)

Sequence Fragment: Asp193- Lys575

Abbexa Ltd, Innovation Centre, Cambridge Science Park, Cambridge, CB4 0EY, UK
Telephone: +44 (0) 1223 755950 - Fax: +44 (0) 1223 755951 - E-Mail: info@abbexa.com

Sequence: MGHHHHHHSGSEF-DAYLNASE TTTLSPSGSA VISTTTIATT PSKPTCDEKY ANITVDYLYN
KETKLF TAKL NVNENVECGN NTCTNNEVHN LTECKNASVS ISHNSCTAPD KTLILDVPPG
VEKFQLHDCT QVEKADTTIC LKWKNIETFT CDTQNITYRF QCGNMIFDNK EIKLENLEPE
HEYKCDSEIL YNNHKFTNAS KIIKTDGSP GEPQIIFCRS EAAHQGVITW NPPQRSFHNF
TLCYIKETEK DCLNLDKNLI KYDLQNLKPY TKYVLSLHAY IIAKVQRNGS AAMCHF TTKS
APPSQVWNMT VSMTSDNSMH VKCRPPRDRN GPHERYHLEV EAGNTLVRNE SHKNCDFRVK
DLQYSTDYTF KAYFHNGDYP GEPFILHHST SYNSK

Tag: N-terminal His-tag

Activity: Not tested

Concentration: Prior to lyophilization: 200 µg/ml

Buffer: Prior to lyophilization: PBS, pH 7.4, containing 0.01% Sarcosyl, 1 mM DTT, 5% Trehalose and Proclin-300.

Note: This product is for research use only.