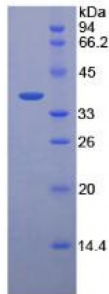


Human Pepsinogen C (PGC) Protein

Catalogue No.: abx068446



SDS-PAGE analysis of Human Pepsinogen C Protein.

Pepsinogen C (PGC) is a protein from Human. It is produced in E.coli using Prokaryotic expression.

Target: Pepsinogen C (PGC)

Origin: Human

Host: E. coli

Tested Applications: ELISA, WB, IP, SDS-PAGE

Purity: > 95%

Form: Lyophilized

Conjugation: Unconjugated

Storage: Store at 2-8 °C for up to one month. Store at -80 °C for up to one year. Avoid repeated freeze/thaw cycles.

Expression: Recombinant

Molecular Weight: 36.9 kDa

Swiss Prot: [P20142](#)

Sequence Fragment: Val61-Ala388

Sequence: MGHHHHHHSGSEF- VTYEPMAYMD AAYFGEISIG TPPQNFLVLF DTGSSNLWVP SVYCQSQACT
SHSRFNPSES STYSTNGQTF SLQYGSGLT GFFGYDTLTV QSIQVPNQEF GLSENEPGTN
FVYAQFDGIM GLAYPALSVD EATTAMQGMV QEGALTSPVF SVYLSNQQGS SGGAVVFGGV
DSSLYTGQIY WAPVTQELYW QIGIEEFLIG GQASGWCSEG CQAIVDTGTS LLTVPQQYMS
ALLQATGAQE DEYGQFLVNC NSIQNLPSLT FIINGVEFPL PPSSYILSNN GYCTVGVEPT
YLSSQNGQPL WILGDVFLRS YYSVYDLGNN RVGFATAA

Abbexa Ltd, Innovation Centre, Cambridge Science Park, Cambridge, CB4 0EY, UK
Telephone: +44 (0) 1223 755950 - Fax: +44 (0) 1223 755951 - E-Mail: info@abbexa.com

Tag: N-terminal His-tag

Activity: Not tested

Concentration: Prior to lyophilization: 200 µg/ml

Buffer: Prior to lyophilization: 20 mM Tris, 150 mM NaCl, pH 8.0, containing 1 mM EDTA, 1 mM DTT, 0.01% Sarcosyl, 5% Trehalose and Proclin-300.

Note: This product is for research use only.