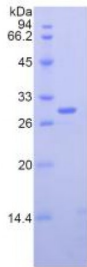


Mouse Nucleolin (NCL) Protein

Catalogue No.: abx068348



SDS-PAGE analysis of Mouse Nucleolin Protein.

Recombinant Nucleolin (NCL) is a recombinant protein from Mouse. It is produced in E.coli using Prokaryotic expression.

Target: Nucleolin (NCL)

Origin: Mouse

Host: E. coli

Tested Applications: ELISA, WB, IP, SDS-PAGE

Purity: > 95%

Form: Lyophilized

Conjugation: Unconjugated

Storage: Store at 2-8 °C for up to one month. Store at -80 °C for up to one year. Avoid repeated freeze/thaw cycles.

Expression: Recombinant

Molecular Weight: 25.8 kDa

Swiss Prot: [P09405](#)

Sequence Fragment: Tyr353-Ser568

Sequence: MGHHHHHHSGSEF- YVDFESAE DLEKALELTG LKVFGEIENK EKPKGRDSKK VRAARTLLAK
NLSFNITEDE LKEVFEDAME IRLVSQDGKS KGIAYIEFKS EADAEKNLEE KQGAEIDGRS
VSLYYTGEKG QRQERTGKTS TWSGESKTLV LSNLSYSATK ETLEEVFEKA TFIKVPQNP
GKPKGYAFIE FASFEDAKEY LNSCNKMEIE GRTIRLELQG SNSRSQPS

Tag: N-terminal His-tag

Abbexa Ltd, Innovation Centre, Cambridge Science Park, Cambridge, CB4 0EY, UK
Telephone: +44 (0) 1223 755950 - Fax: +44 (0) 1223 755951 - E-Mail: info@abbexa.com

Activity: Not tested

Concentration: Prior to lyophilization: 200 µg/ml

Buffer: Prior to lyophilization: PBS, pH 7.4, containing 0.01% Sarcosyl, 1 mM DTT, 5% Trehalose and Proclin-300.

Note: This product is for research use only.