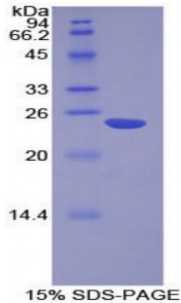


Human Non Metastatic Cells 6, Protein Expressed In (NME6) Protein

Catalogue No.: abx068332



SDS-PAGE analysis of Human NME6 Protein.

Recombinant Non Metastatic Cells 6, Protein Expressed In (NME6) is a recombinant protein from Human. It is produced in E.coli using Prokaryotic expression.

Target: Non Metastatic Cells 6, Protein Expressed In (NME6)

Origin: Human

Host: E. coli

Tested Applications: ELISA, WB, IP, SDS-PAGE

Purity: > 95%

Form: Lyophilized

Conjugation: Unconjugated

Storage: Store at 2-8 °C for up to one month. Store at -80 °C for up to one year. Avoid repeated freeze/thaw cycles.

Expression: Recombinant

Molecular Weight: 24.4 kDa

Swiss Prot: [O75414](#)

Sequence Fragment: Ser3-Gly182

Sequence: MGSSHHHHHH SSGLVPRGSH MASMTGGQQM GRGSEF-SILRSPQA LQLTLALIKP DAVAHPLILE
AVHQQILSNK FLIVRMRELL WRKEDCQRFY REHEGRFFYQ RLVEFMASGP IRAYILAHKD
AIQLWRTL MG PTRVFRARHV APDSIRGSFG LTDTRNTTHG SDSVVSASRE IAFFPDFSE
QRWYEEEEEPQ LRCGPVCYSP EGGVHYVAGT GG

Abbexa Ltd, Innovation Centre, Cambridge Science Park, Cambridge, CB4 0EY, UK
Telephone: +44 (0) 1223 755950 - Fax: +44 (0) 1223 755951 - E-Mail: info@abbexa.com

Tag: Two N-terminal tags, His-tag and T7-tag

Activity: Not tested

Concentration: Prior to lyophilization: 200 µg/ml

Buffer: Prior to lyophilization: PBS, pH 7.4, containing 0.01% Sarcosyl, 1 mM DTT, 5% Trehalose and Proclin-300.

Note: This product is for research use only.